

ADDENDUM #1

GENERAL NOTES

STANDARD SPECIFICATION FOR STATE OF CALIFORNIA DEPARTMENT OF TRANSPORTATION (CALTRANS) 2015 SHALL PREVAIL.

THE CONTRACTOR SHALL BE RESPONSIBLE FOR VERIFYING THE LOCATIONS OF ALL UTILITIES. THIS WORK WILL NOT BE MEASURED OR PAID FOR DIRECTLY BUT WILL BE CONSIDERED A SUBSIDIARY OBLIGATION OF THE CONTRACT. UTILITIES SUCH AS TELEPHONE AND POWER LINES SHALL BE WORKED AROUND. ANY DAMAGE TO THESE UTILITIES SHALL BE THE RESPONSIBILITY OF THE CONTRACTOR.

THE CONTRACTOR SHALL BE RESPONSIBLE FOR THE SIGNING AND MAINTENANCE OF TRAFFIC DETOURS DURING CONSTRUCTION IN ACCORDANCE WITH SECTION 12 OF THE CALTRANS 2015 STANDARD SPECIFICATIONS AND THE SPECIAL CONTRACT REQUIREMENTS.

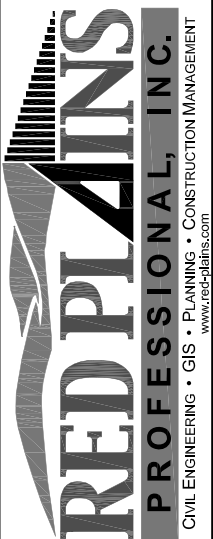
THE CONTRACTOR SHALL BE RESPONSIBLE FOR ALL QUALITY CONTROL WORK IN ACCORDANCE WITH CALTRANS 2015 STANDARD SPECIFICATIONS AND WITH DETAILED REQUIREMENTS IN THE SPECIAL CONTRACT REQUIREMENTS.

THE CONTRACTOR SHALL BE RESPONSIBLE FOR LOCATING MATERIALS SOURCES FOR THIS PROJECT AS WELL AS MEETING ALL REQUIREMENTS OF THE CALTRANS 2015 STANDARD SPECIFICATIONS AND THE SPECIAL CONTRACT REQUIREMENTS. THE CONTRACTOR SHALL ALSO BE RESPONSIBLE FOR SECURING ALL PERMITS FOR THE USE OF THE SOURCE AND PROVIDING COPIES OF THE DOCUMENTS TO THE PROJECT C.O.R.

THE CONTRACTOR SHALL BE RESPONSIBLE FOR OBTAINING ANY NECESSARY PERMITS FROM THE STATE, COUNTY, OR LOCAL AGENCIES IF WORK IS TO BE PERFORMED WITHIN THEIR RIGHT-OF-WAY PRIOR TO ANY CONSTRUCTION ACTIVITIES.

| QUANTITIES LIST | | | |
|-----------------|---|----------|------|
| ITEM NUMBER | ITEM DESCRIPTION | QUANTITY | UNIT |
| 999990 | MOBILIZATION | 1 | LS |
| 120100 | TEMPORARY TRAFFIC CONTROL | 1 | LS |
| 250201 | CLASS 2 AGGREGATE SUBBASE | 22 | CY |
| 374207 | CRACK TREATMENT | 0.7 | LNMI |
| 375020 | PARKING AREA SEAL | 2142 | SQYD |
| 390136 | MINOR HOT MIX ASPHALT | 24 | TON |
| 398001 | REMOVE ASPHALT CONCRETE PAVEMENT (SQFT) | 207 | SQFT |
| 730010 | MINOR CONCRETE (CURB) (LF) | 104 | LF |
| 731700 | REMOVE CURB | 188 | LF |
| 731780 | REMOVE CONCRETE SIDEWALK (SQYD) | 19 | SQYD |
| 820230 | REMOVE SIGN | 2 | EA |
| 820320 | REMOVE METAL POST | 2 | EA |
| 820840 | ROADSIDE SIGN - ONE POST | 3 | EA |
| 840651 | PAINTED STALL LINES AND PAVEMENT MARKINGS | 780 | SQFT |
| | PRECAST CONC. WHEEL STOP | 13 | EA |
| | TRUNCATED DOME SURFACE 2'x4' | 8 | EA |

YREKA CLINIC PARKING LOT
 KARUK TRIBE
 YREKA, CA
NOTES & QUANTITY LIST



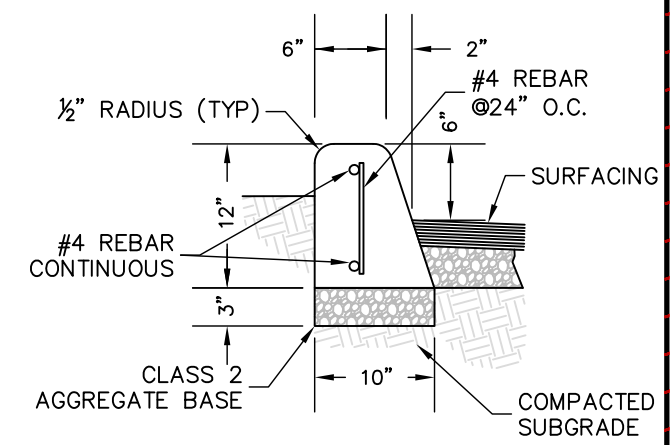
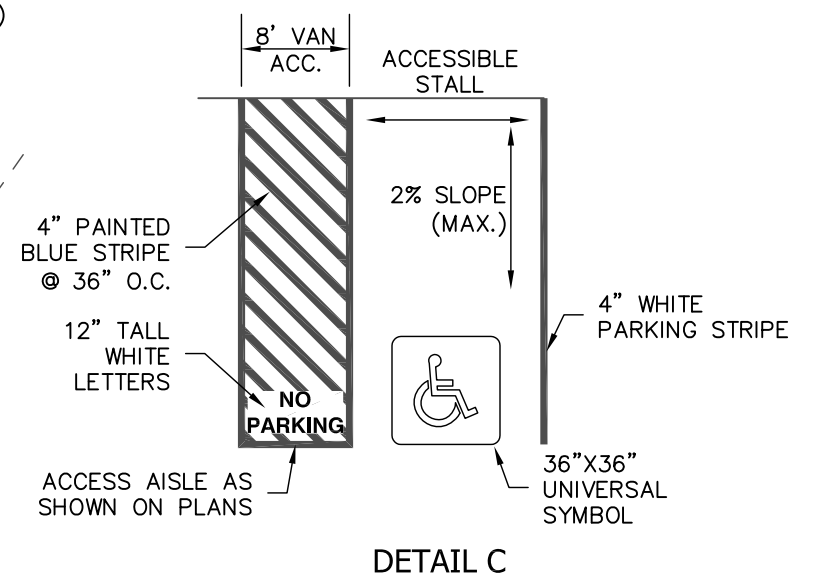
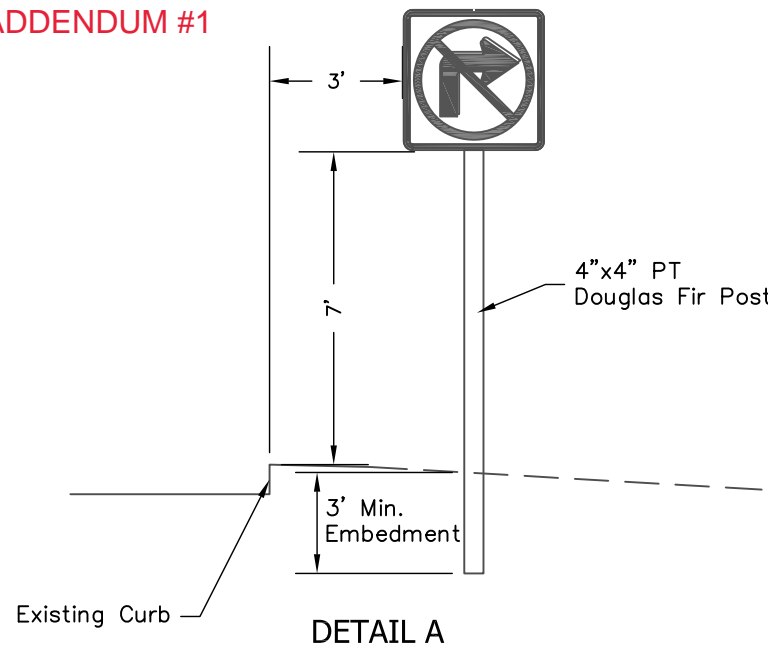
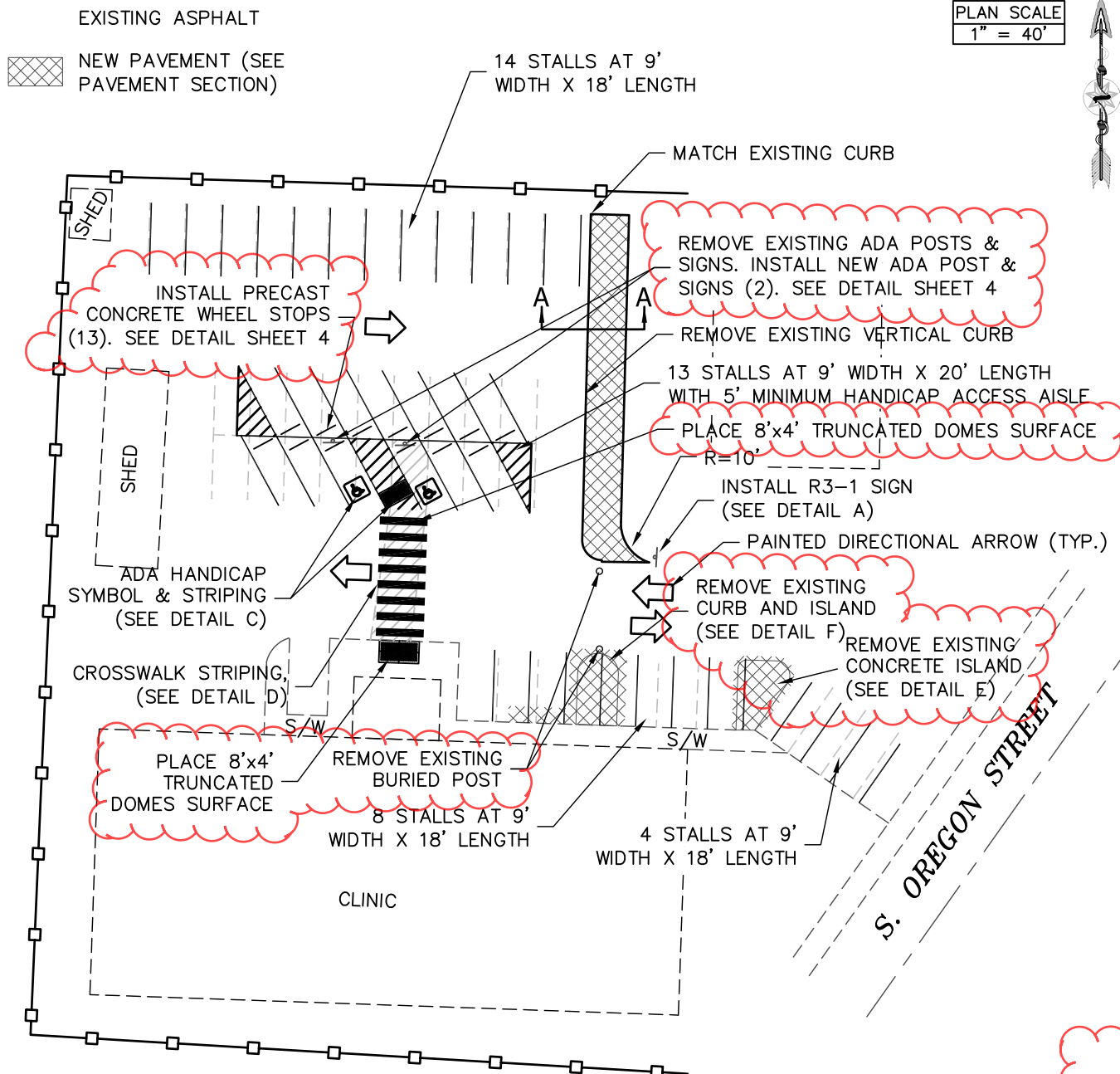
RED PLAINS PROFESSIONAL, INC.
 2103 NE 129th STREET
 SUITE 201
 VANCOUVER WA, 98686
 TEL: (360) 448-7999
 FAX: (360) 258-0274

| NO. | DATE | REVISIONS DESCRIPTION |
|-----|------|-----------------------|
| | | |
| | | |
| | | |
| | | |

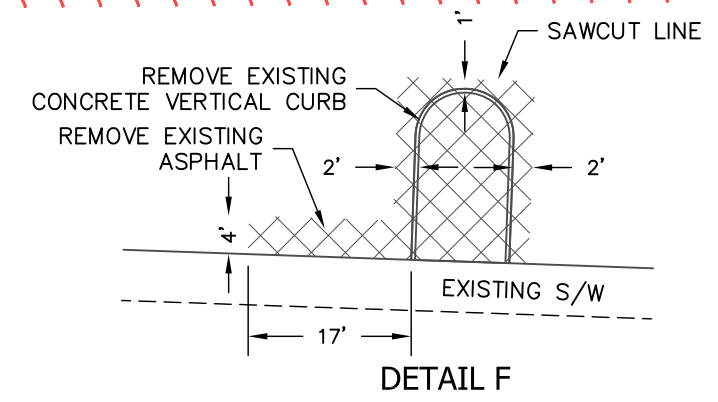
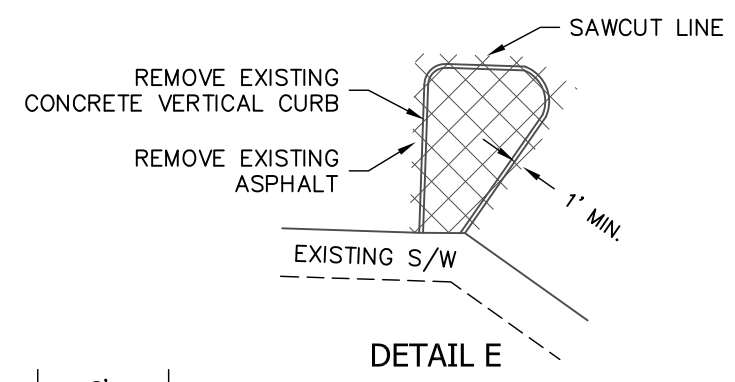
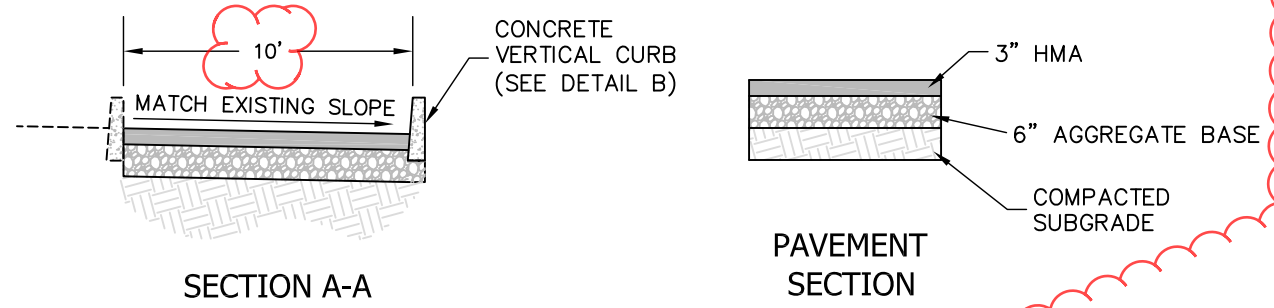
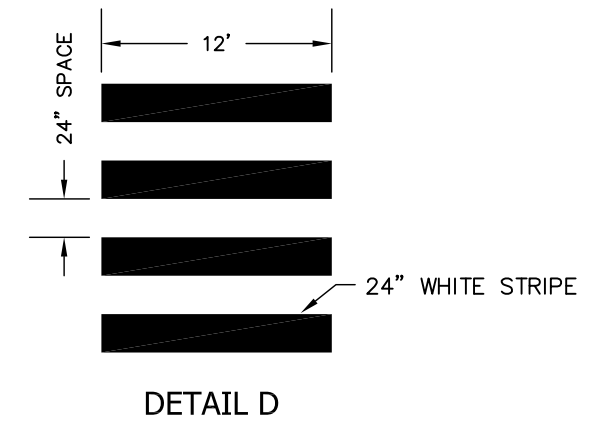
Z:\PROJECTS\60150 - KARUK TRIBE - 2017 T.O.'S\MISC\CLINIC_PARKING\CLINIC.DWG 4/16/2018 1:37:49 PM by:Kevin.Ortega

PLAN SCALE
1" = 40'

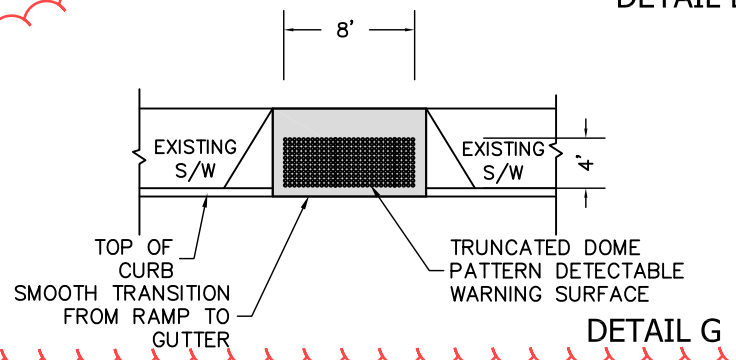
ADDENDUM #1



- NOTES:
1. Concrete to be 4-inch max. slump, 1 1/2 inch max. slump for extruded curbs.
 2. Provide a weakened plane joint each 12 ft. o.c.
 3. All exposed surface shall receive a light broom finish parallel to the curb.
 4. Rebar shall have 2" min. clearance from concrete surface



- NOTES:
1. CONTRACTOR SHALL APPLY -
 - a. CRACK TREATMENT TO EXISTING PARKING LOT
 - b. FOG SEAL TO EXISTING PARKING LOT
 - c. PERMENENT PAVEMENT MARKINGS
 2. ALL STRIPING SHALL BE 4" WIDE WHITE UNLESS OTHERWISE NOTED.
 3. PARKING LOT STRIPING MAY BE FIELD ADJUSTED BASED ON ACTUAL MEASUREMENTS, AS APPROVED BY THE C.O.R.



- NOTES:
1. The texture of the ramp surface shall be rougher than the texture of the surrounding sidewalk (slip resistant).
 2. Curb ramp shall have a detectable warning surface truncated dome pattern as shown on Caltrans Standard Plan A88A.
 3. Detectable warning surface shall contrast visually with adjoining surfaces, either light-on-dark or dark-on-light. See ADA Accessibility Guidelines 4.29.2.
 4. Approved manufactures: Detectable Warning Systems™, ADA Solutions Inc. or approved equal.

YREKA CLINIC PARKING LOT
KARUK TRIBE
YREKA, CA
LAYOUT

RED PLAINS
PROFESSIONAL, INC.
CIVIL ENGINEERING • GIS • PLANNING • CONSTRUCTION MANAGEMENT
www.red-plains.com

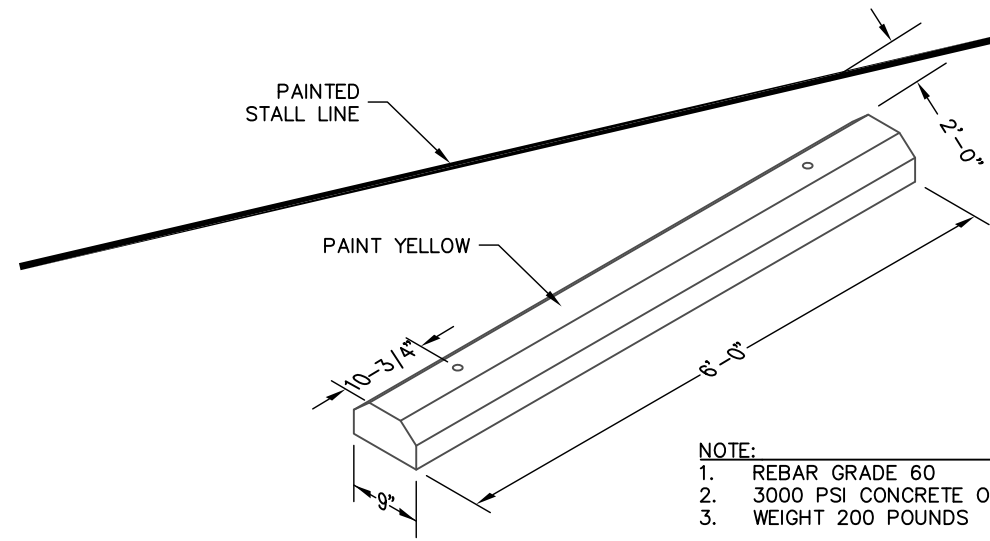
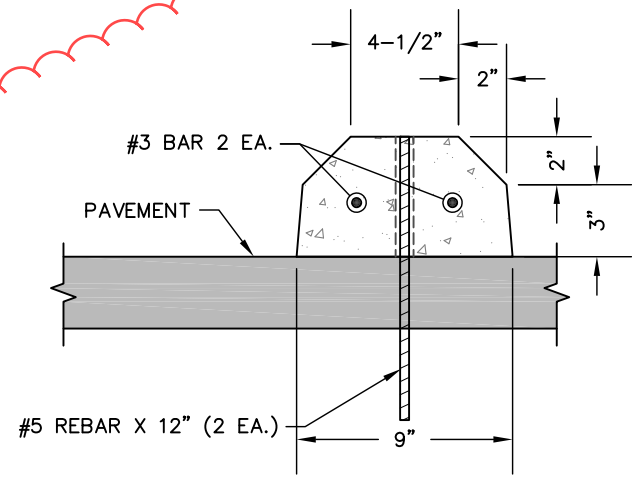
RED PLAINS PROFESSIONAL, INC.
2103 NE 129th STREET
SUITE 201
VANCOUVER WA, 98686
TEL: (360) 448-7999
FAX: (360) 258-0274

| NO. | DATE | DESCRIPTION |
|-----|------|-------------|
| | | |
| | | |
| | | |
| | | |
| | | |
| | | |
| | | |
| | | |
| | | |

PROJ. 60150
SHEET 3

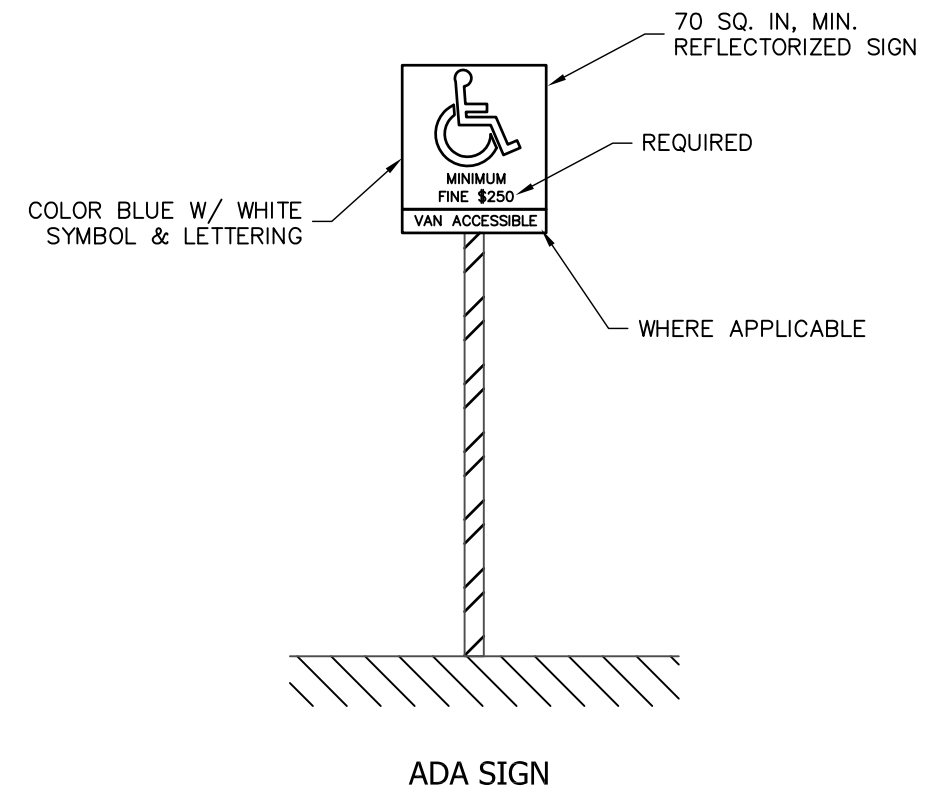
Z:\PROJECTS\60150 - KARUK TRIBE - 2017 T.O.'S\MISC\CLINIC_PARKING\CLINIC.DWG 4/16/2018 1:37:50 PM by:Kevin.Ortega

ADDENDUM #1



- NOTE:
1. REBAR GRADE 60
 2. 3000 PSI CONCRETE OR GREATER
 3. WEIGHT 200 POUNDS

PRECAST CONCRETE WHEEL STOP



YREKA CLINIC PARKING LOT
 KARUK TRIBE
 YREKA, CA
 DETAILS

RED PLAINS
 PROFESSIONAL, INC.
 CIVIL ENGINEERING • GIS • PLANNING • CONSTRUCTION MANAGEMENT
 www.red-plains.com

RED PLAINS PROFESSIONAL, INC.
 2103 NE 129th STREET
 SUITE 201
 VANCOUVER WA, 98686
 TEL: (360) 448-7999
 FAX: (360) 258-0274

| NO. | DATE | REVISIONS DESCRIPTION |
|-----|------|-----------------------|
| | | |
| | | |
| | | |
| | | |

Z:\PROJECTS\60150 - KARUK TRIBE - 2017 T.O.'S\MISC\CLINIC_PARKING\CLINIC.DWG 4/16/2018 1:37:51 PM by:Kevin.Ortega