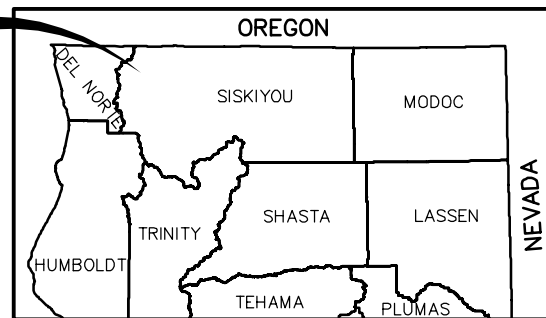


PROJECT LOCATION

STATE LOCATION MAP

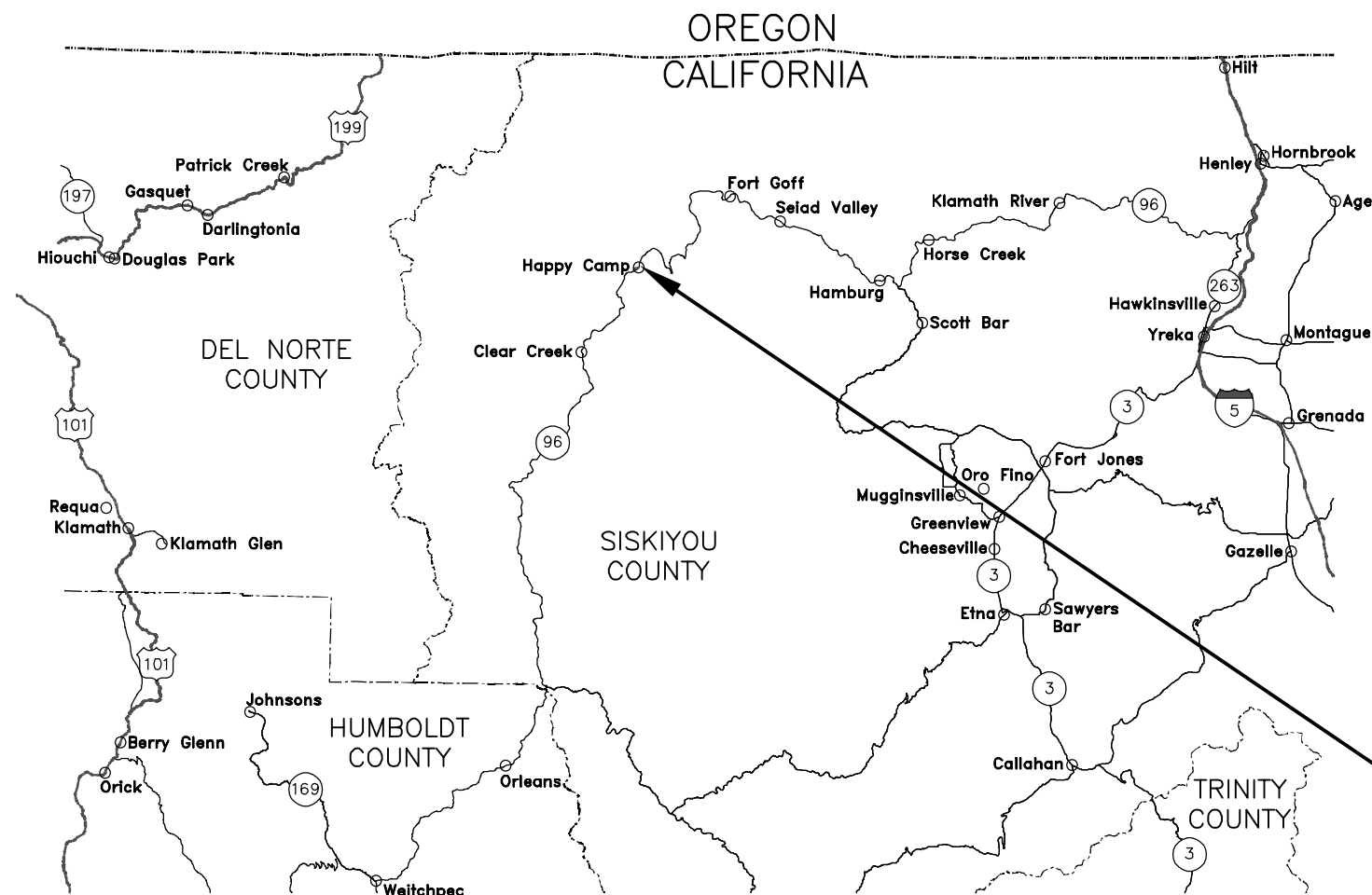


PLANS FOR CONSTRUCTION OF
ITROOP ROAD GUIDERAIL
KARUK TRIBE
HAPPY CAMP, CALIFORNIA
PROJECT NO. 4569DR-CA, (165269) ITROOP GUIDERAIL

PROJECT INDEX TO SHEETS	
SHEET	SHEET DESCRIPTION
1	TITLE SHEET
2	PLAN VIEW
3-6	GUARDRAIL DETAILS



STATE OF CALIFORNIA



ROADWAY LEGEND

	INTERSTATE ROUTE MARKER
	U.S. ROUTE MARKER
	STATE ROUTE MARKER

WEST SIDE TRAIL DESIGN
PROJECT DESCRIPTION:
GUARDRAIL, SIGNING
PROJECT LENGTH = 1,345 L.F.

UTILITY CONTACTS		
UTILITY	COMPANY NAME	CONTACT
WATER	HAPPY CAMP WATER DISTRICT	(530) 493-5106
SEWER	HAPPY CAMP SANITARY DISTRICT	(530) 493-5293
POWER	PACIFIC POWER	(888) 221-7070
GAS	PACIFIC POWER	(888) 221-7070

811 NOTICE!
TWO WORKING DAYS BEFORE
YOU DIG CALL: 811
WWW.BLUESTAKES.ORG

Know what's below.
Call before you dig.

EXISTING UTILITIES ARE SHOWN ON PLANS FOR THE CONVENIENCE OF THE CONTRACTOR ONLY. THE CONTRACTOR IS RESPONSIBLE FOR THE PROTECTION OF ALL UTILITIES. THE ENGINEER BEARS NO RESPONSIBILITY FOR UTILITIES NOT SHOWN OR SHOWN INCORRECTLY.



ITROOP ROAD GUIDERAIL
HAPPY CAMP, CA
TITLE SHEET



RED PLAINS PROFESSIONAL, INC.
2103 NE 129TH STREET
SUITE 201
VANCOUVER, WA. 98686
TEL: (360) 448-7999
FAX: (360) 258-0274
www.red-plains.com

NO.	DATE	REVISIONS DESCRIPTION

Z:\PROJECTS\70019 - KARUK - ITROOP ROAD GUARDRAIL REPLACEMENT\16 CADD\SOURCE\ITROOP_GRRREPLACEMENT.DWG 5/27/2021 11:25:00 AM by:kevin.cartaga

GENERAL NOTES

ALL WORKMANSHIP AND MATERIALS SHALL CONFORM TO THE STANDARD SPECIFICATIONS FOR CONSTRUCTION OF ROADS AND BRIDGE ON FEDERAL HIGHWAY PROJECTS (FP-14 U.S. CUSTOMARY UNITS) ALONG WITH MODIFICATIONS IN THE SPECIAL CONTRACT REQUIREMENTS (SCR'S).

THE CONTRACTOR IS RESPONSIBLE TO READ AND FULLY EXAMINE THE PLANS, SPECIFICATIONS, AND QUANTITY ESTIMATES. THE CONTRACTOR SHALL ALSO VISIT THE SITE TO EXAMINE AND VERIFY SITE CONDITIONS AND LIMITATIONS PRIOR TO SUBMITTING A BID. THE CONTRACTOR SHALL BE RESPONSIBLE ANY AND ALL ERRORS RESULTING FROM THE FAILURE TO MAKE SUCH EXAMINATIONS.

ANY INFORMATION DERIVED FROM THE PLANS OR SPECIFICATIONS THAT CONFLICT WITH THE INTENT OF THIS PROJECT'S DESIGN WILL NOT RELIEVE THE CONTRACTOR FROM ANY RISK OR FROM FULFILLING THE TERMS OF THE CONTRACT.

ALL PERMANENT AND TEMPORARY TRAFFIC CONTROL DEVICES SHALL BE PLACED AND IN CONFORMANCE WITH THE LATEST EDITION OF THE MANUAL ON UNIFORM TRAFFIC CONTROL DEVICES (MUTCD) AND IN ACCORDANCE WITH PLAN DETAILS.

THE LOCATION AND ELEVATION OF ALL EXISTING UTILITIES SHOWN ON THE PLANS IS APPROXIMATE THE CONTRACTOR SHALL BE RESPONSIBLE FOR VERIFYING THE LOCATIONS OF ALL UTILITIES. THIS WORK WILL NOT BE MEASURED OR PAID FOR DIRECTLY BUT WILL BE CONSIDERED A SUBSIDIARY OBLIGATION OF THE CONTRACT. ANY DAMAGE TO EXISTING UTILITIES THROUGH THE NEGLIGENCE OF THE CONTRACTOR SHALL BE CORRECTED AND RESTORED TO THEIR ORIGINAL CONDITION AT THE CONTRACTOR'S EXPENSE.

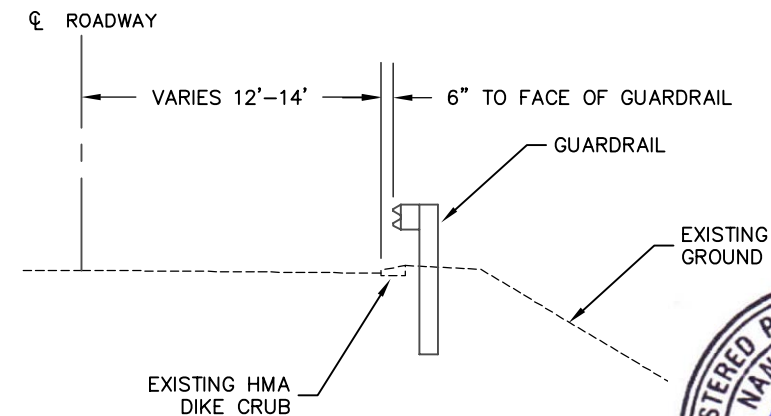
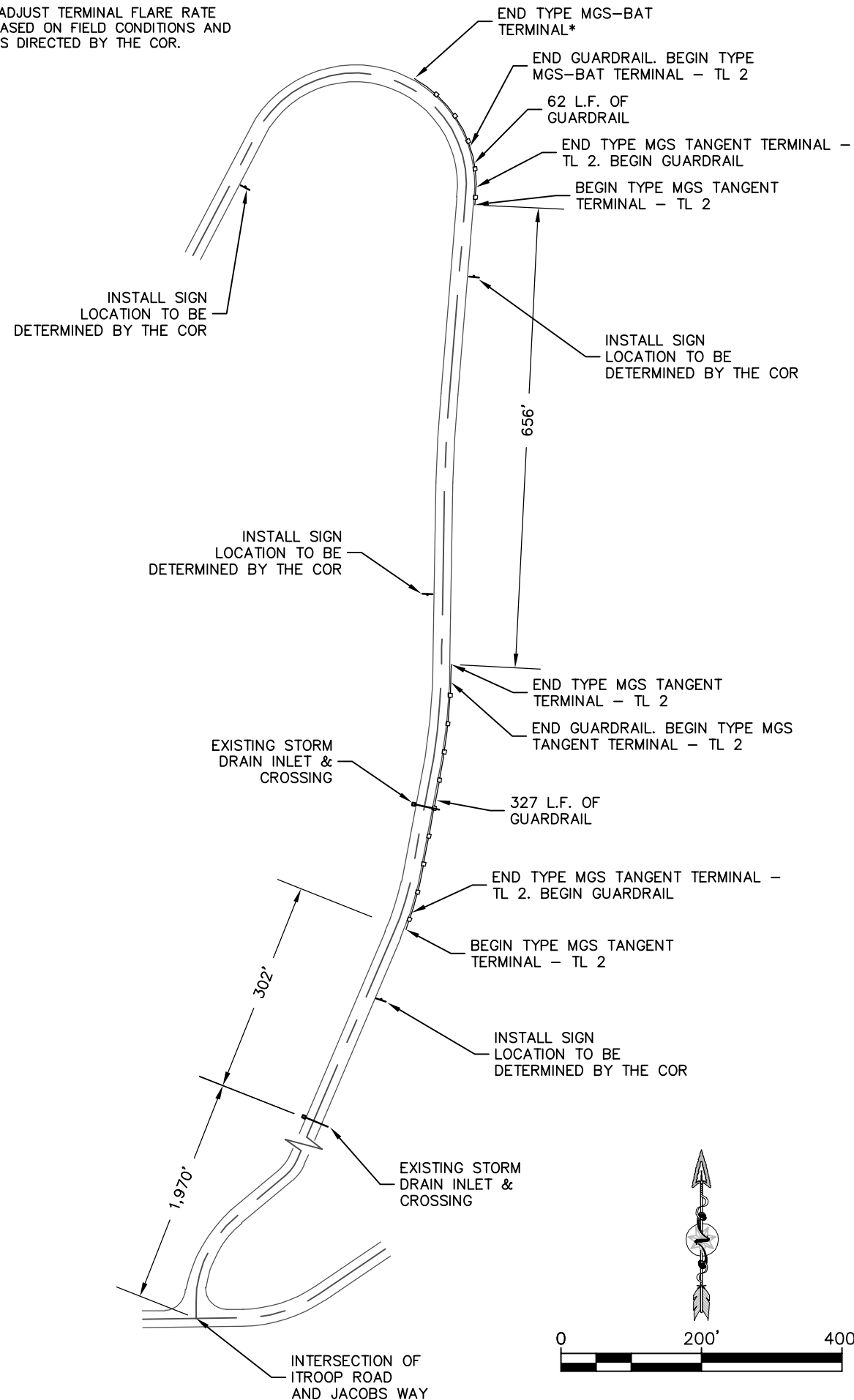
THE CONTRACTOR SHALL BE RESPONSIBLE FOR THE SIGNING AND MAINTENANCE OF ANY TRAFFIC DETOURS DURING CONSTRUCTION IN ACCORDANCE WITH FP-14, SECTION 156 AND 635, AND THE SCR'S.

THE CONTRACTOR SHALL BE RESPONSIBLE FOR ALL QUALITY CONTROL WORK IN ACCORDANCE WITH FP-14 AND WITH DETAILED REQUIREMENTS IN THE SCR'S.

THE CONTRACTOR IS RESPONSIBLE FOR THE DISPOSAL OF CONSTRUCTION DEBRIS AND UNSUITABLE MATERIAL IN ACCORDANCE WITH SECTIONS 107 AND 203 OF FP-14 AND SCR'S.

QUANTITIES LIST			
ITEM NO.	ITEM DESCRIPTION	QUANTITY	UNIT
15101	MOBILIZATION	1	L.S.
	TERO TAX (2%)	1	L.S.
	CULTURAL MONITOR	1	L.S.
20302	REMOVAL OF GUARDRAIL	589	L.F.
61701	GUARDRAIL SYSTEM MGS, TYPE 2, CLASS A STEEL POSTS	389	L.F.
61702-1500	TERMINAL SECTION, TYPE MGS TANGENT	3	EA.
61702-1700	TERMINAL SECTION, TYPE MSG-BAT	1	EA.
63301	SIGN SYSTEM	4	EA.
63501	TEMPORARY TRAFFIC CONTROL	1	L.S.

*ADJUST TERMINAL FLARE RATE BASED ON FIELD CONDITIONS AND AS DIRECTED BY THE COR.



TYPICAL GUARDRAIL SECTION
NOT TO SCALE



ITROOP ROAD GUIDERAIL
HAPPY CAMP, CA
PLAN VIEW

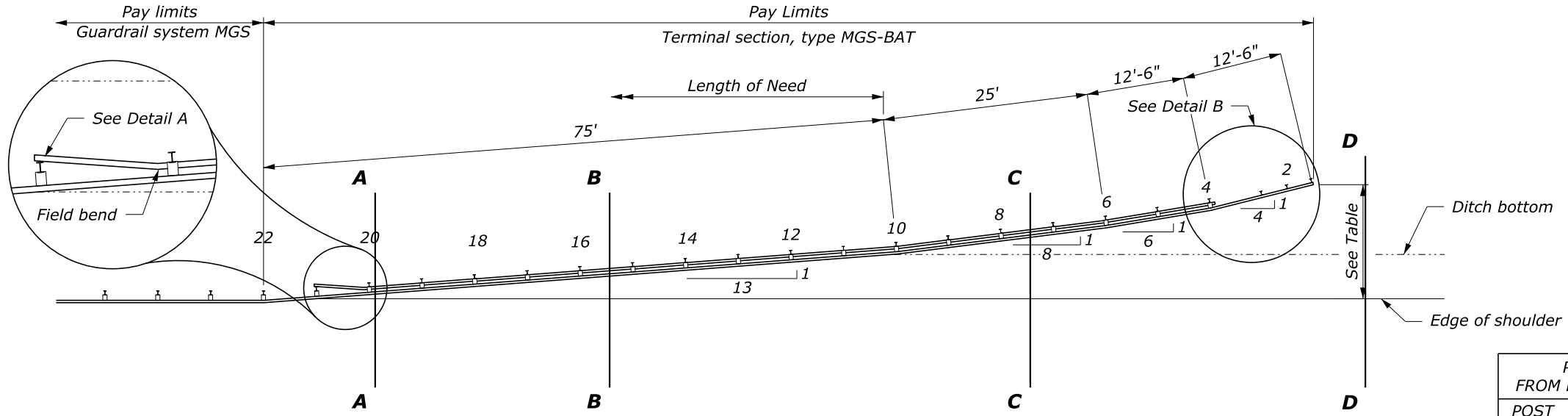


RED PLAINS PROFESSIONAL, INC.
2103 NE 129TH STREET
SUITE 201
VANCOUVER, WA. 98686
TEL: (360) 448-7999
FAX: (360) 258-0274
www.red-plains.com

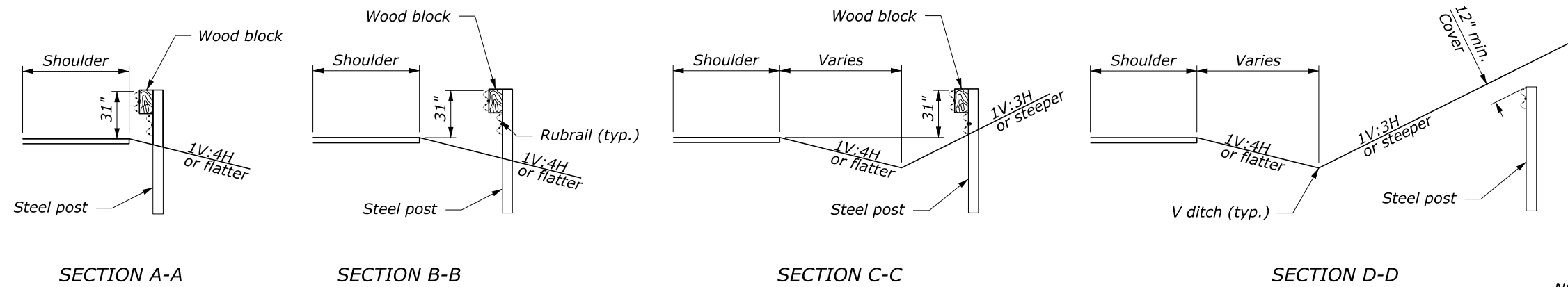
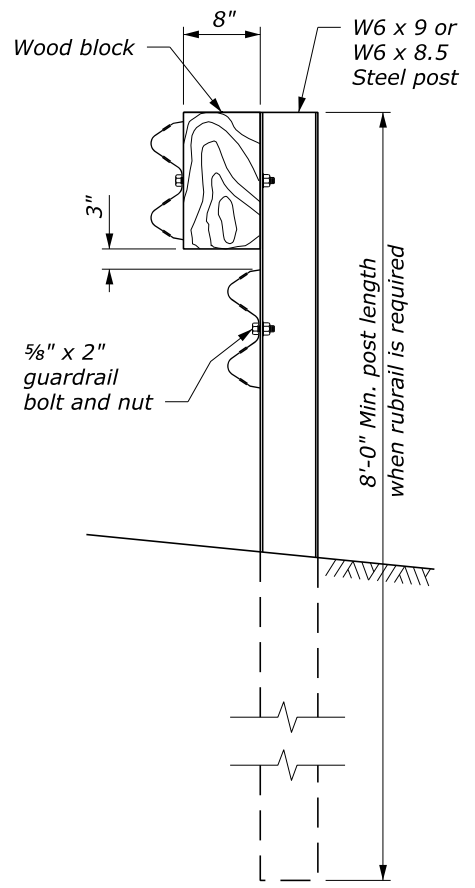
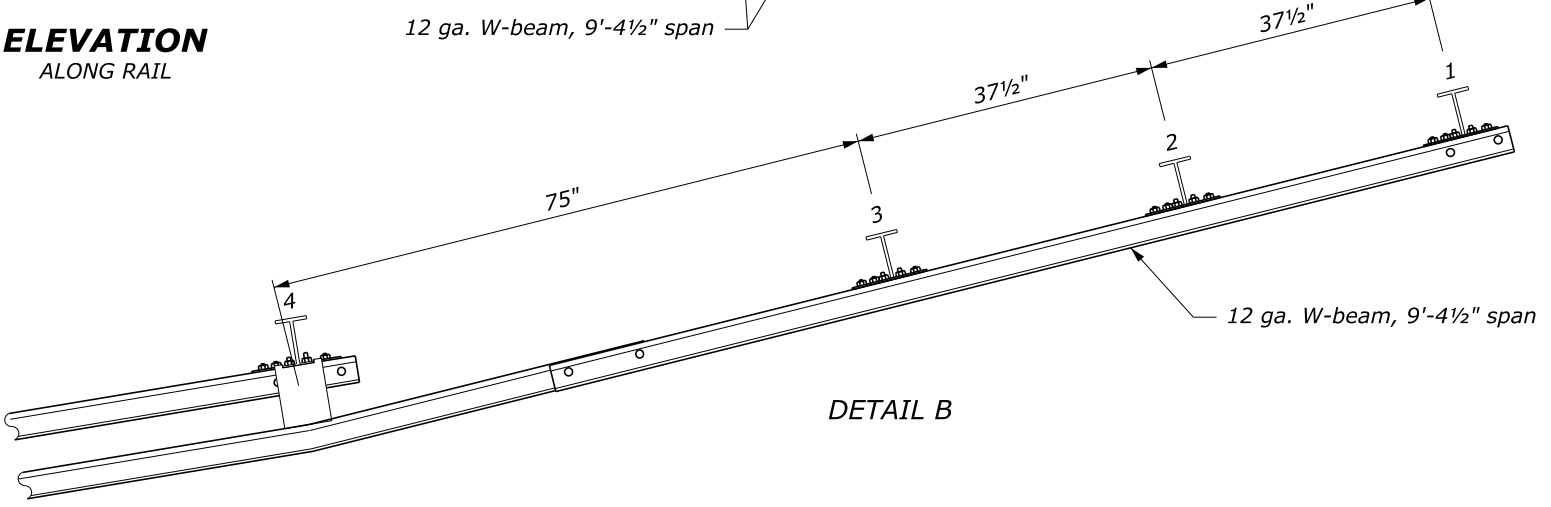
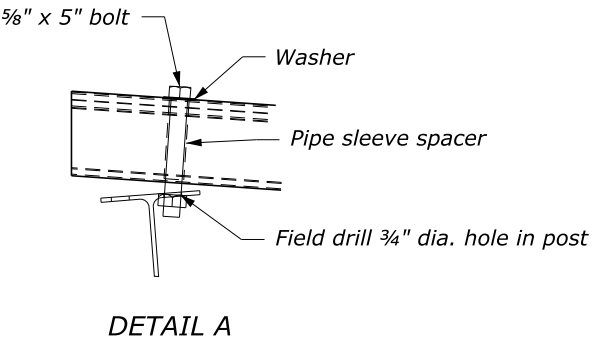
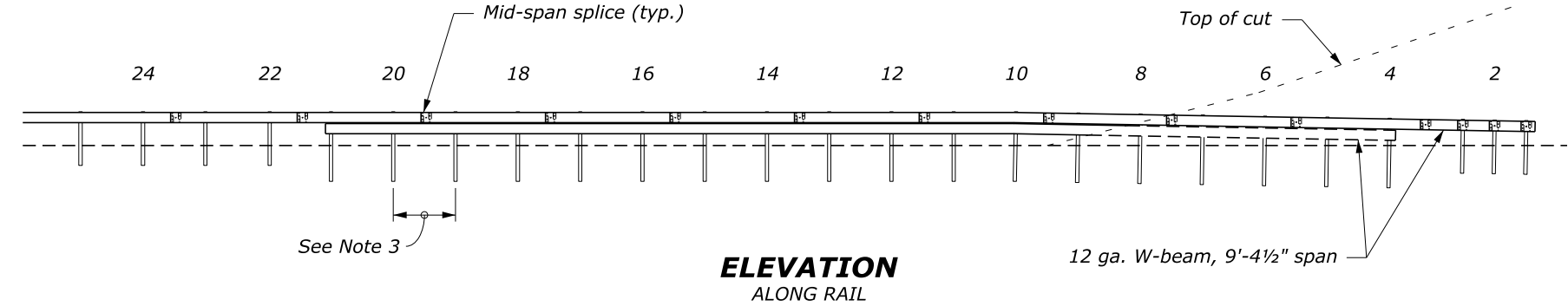
NO.	DATE	DESCRIPTION

Z:\PROJECTS\70019 - KARUK - ITROOP ROAD GUARDRAIL REPLACEMENT\16 CADD\SOURCE\ITROOP_GRRPLACEMENT.DWG 5/27/2021 11:25:36 AM by:kevin.ortega

NOTE:
1. See Detail C617-31 for other details.
2. Steel posts shown. Wood posts may be used as an alternate, except for Posts 1 - 3 where steel posts are required.
3. Typical post spacing is 6'-3" unless otherwise noted.

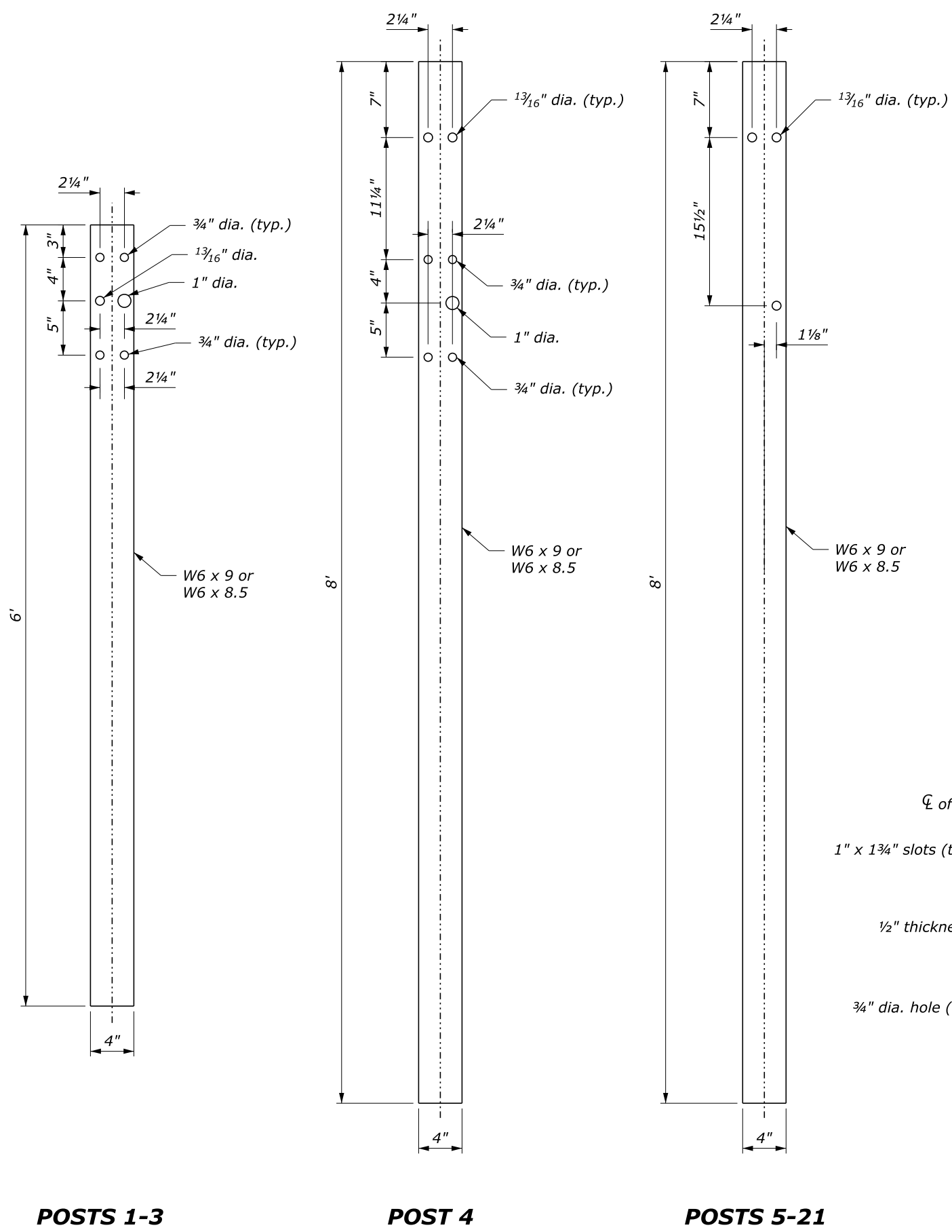


POST OFFSETS FROM EDGE OF SHOULDER	
POST	DISTANCE
1	13'-11 ³ / ₄ "
4	10'-11"
6	8'-10 ¹ / ₄ "
10	69"

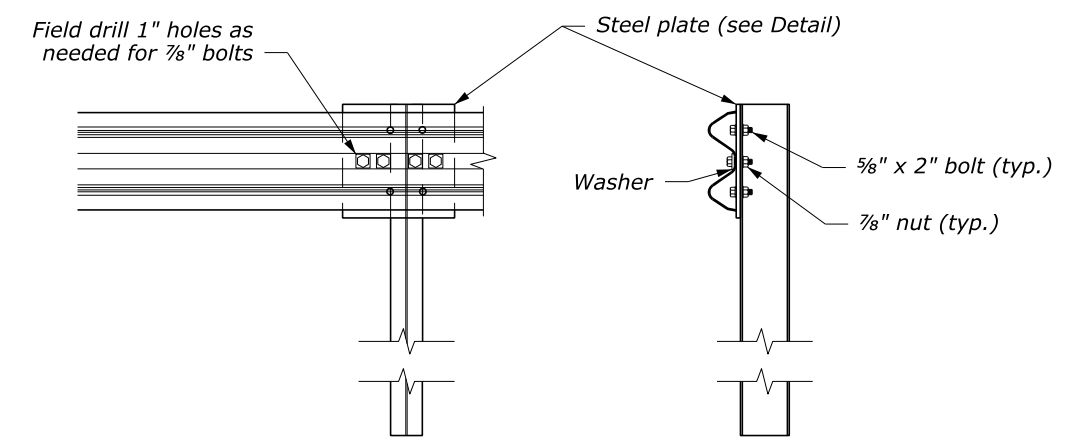


\$\$\$USER\$\$\$
\$\$\$DGN\$\$\$
\$\$\$TIME\$\$\$
\$\$\$DATE\$\$\$

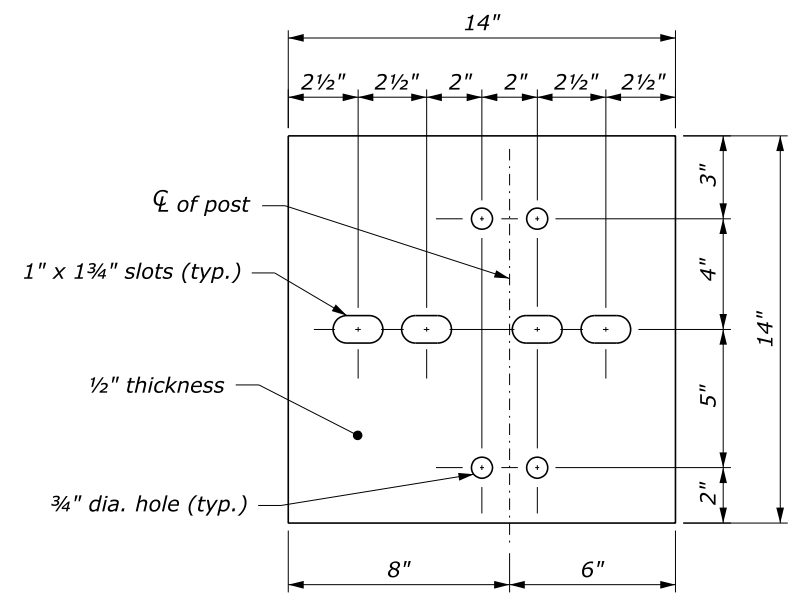
\$\$\$DATE\$\$\$
 \$\$\$TIME\$\$\$
 \$\$\$DGN\$\$\$
 \$\$\$USER\$\$\$



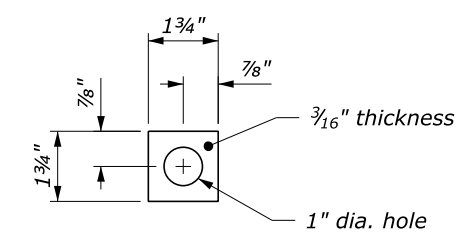
- NOTE:**
1. See Sheet 1 of 2 for terminal layout.
 2. Use zinc rich paint to coat field drilled holes.
 3. Anchor plate and hardware are typical on top rail of Posts 1 -3 and rub rail at Post 4.



SPECIAL RAIL TO POST CONNECTION AT POSTS 1, 2, AND 3



GALVANIZED STEEL PLATE

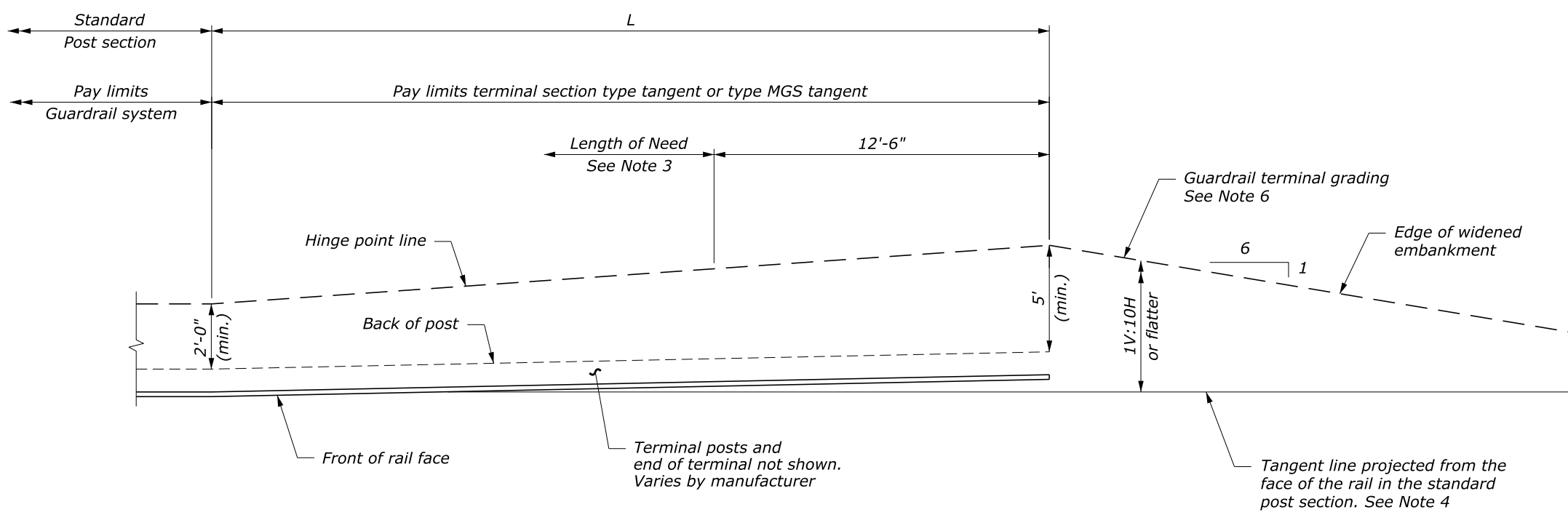


GALVANIZED SQUARE WASHER

STEEL PLATE AND WASHER
See Note 3

NO SCALE

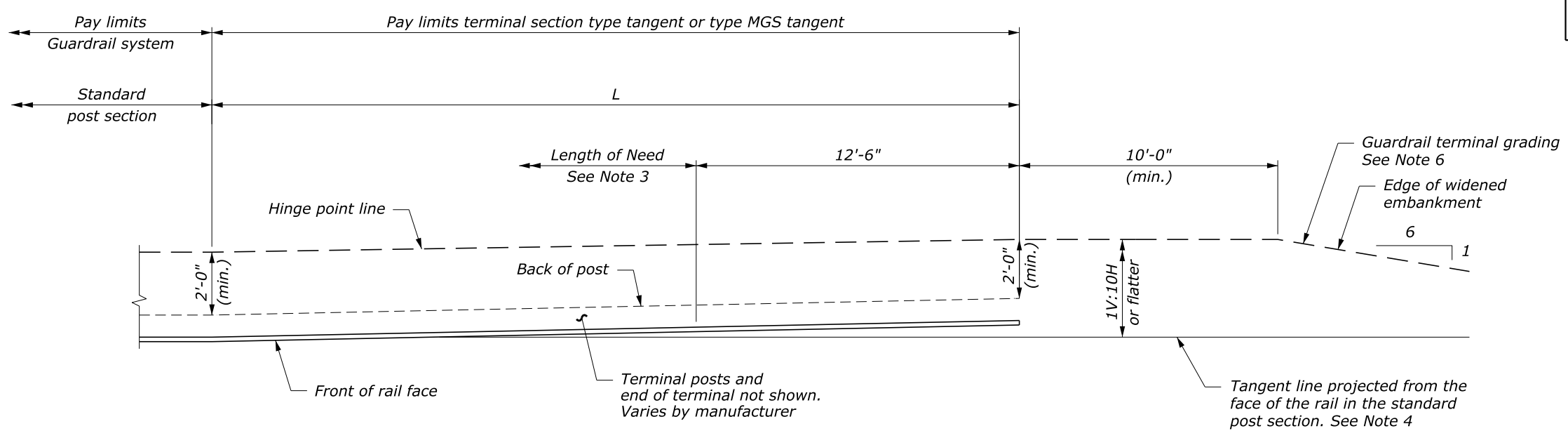
U.S. DEPARTMENT OF TRANSPORTATION FEDERAL HIGHWAY ADMINISTRATION CENTRAL FEDERAL LANDS HIGHWAY DIVISION	
U.S. CUSTOMARY DETAIL MGS W-BEAM GUARDRAIL BACK SLOPE ANCHOR TERMINAL TYPE MGS-BAT Sheet 2 of 2	
REVISIONS: DETAIL APPROVED FOR USE 04/2020	DETAIL C617-18



PLAN
PREFERRED GRADING

- NOTE:**
1. Install tangent terminal according to the manufacturer's recommendations. See manufacturer's drawings for other details.
 2. Construct the terminal grading layout as shown in the staking notes or model. If no staking notes or model are provided, use the preferred grading layout as much as practical within site constraints. If necessary because of site limitations, use the alternative grading layout.
 3. For design purposes, the length of need is assumed to begin at post 3. Verify the length of need with the manufacturer for a specific product. Adjust grading as necessary to install the tangent terminal according to the manufacturer's recommendations.
 4. Install terminal at a 1:25 taper or flatter, to position the end farther away from the edge of the shoulder, or use a taper according to manufacturer's recommendations.
 5. Install a reflectorized object marker on the end of the terminal.
 6. Construct a 1V:4H slope outside of the guardrail terminal grading extents where practical.

TEST LEVEL	L (FT)
2 (≤ 45 mph)	25
3 (> 45 mph)	37.5 or 50 (for G4)
	50 (for MGS)



PLAN
ALTERNATIVE GRADING

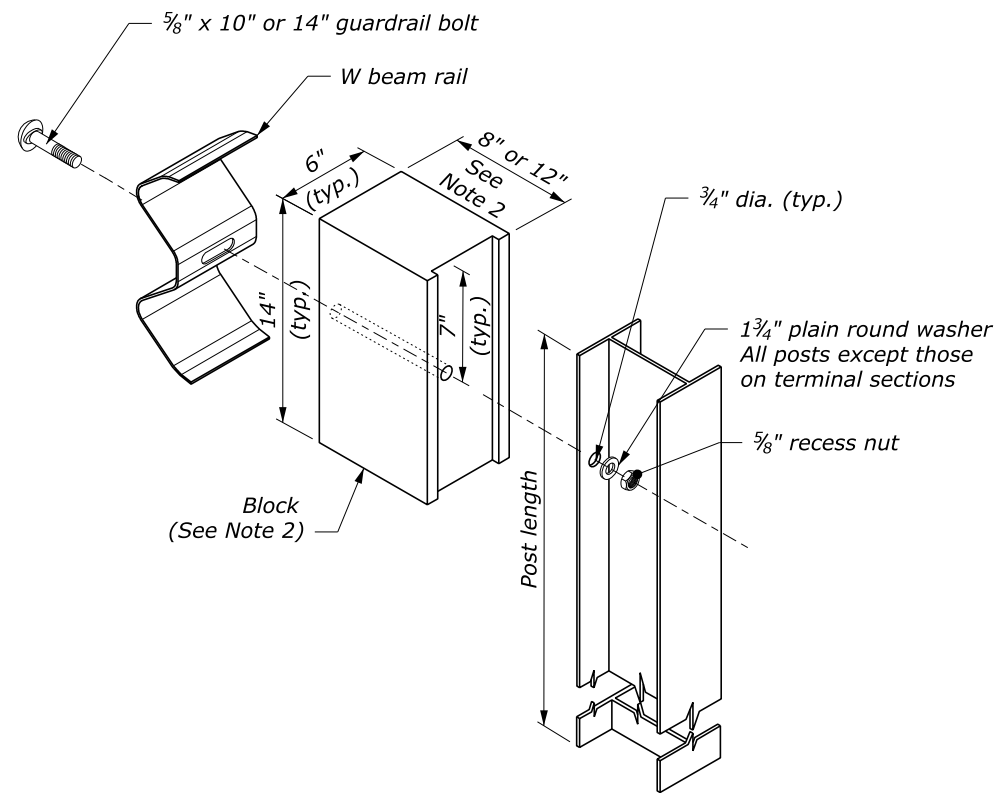
U.S. DEPARTMENT OF TRANSPORTATION
FEDERAL HIGHWAY ADMINISTRATION
CENTRAL FEDERAL LANDS HIGHWAY DIVISION

U.S. CUSTOMARY DETAIL
**MGS AND G4
W-BEAM GUARDRAIL
TYPE TANGENT TERMINAL
AND GRADING**

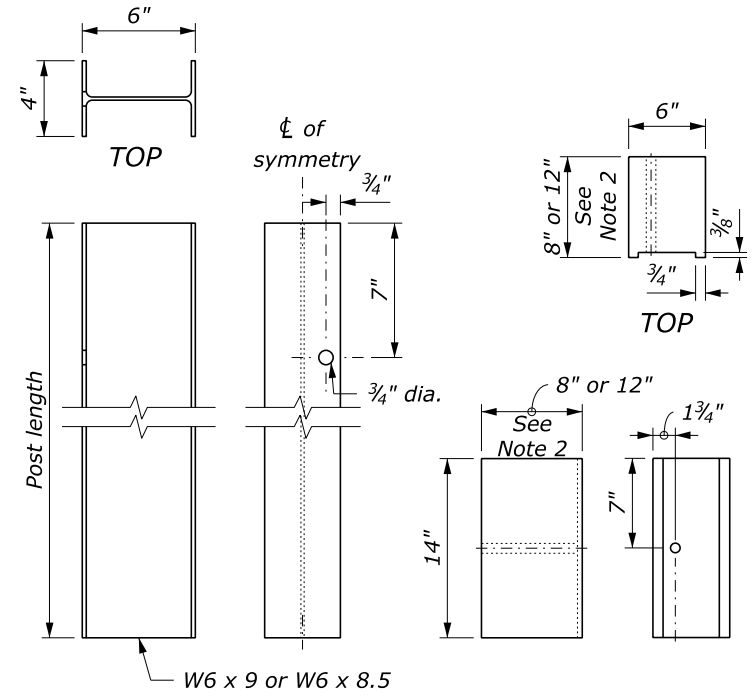
DETAIL APPROVED FOR USE 04/2020	DETAIL
REVISED:	C617-20

NO SCALE

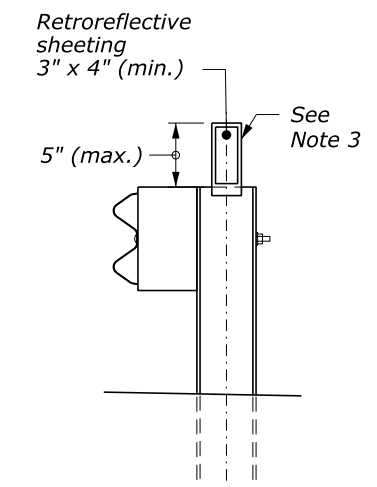
\$\$\$DATE\$\$\$
 \$\$\$TIME\$\$\$
 \$\$\$DGN\$\$\$
 \$\$\$USER\$\$\$



POST AND BLOCK DETAIL



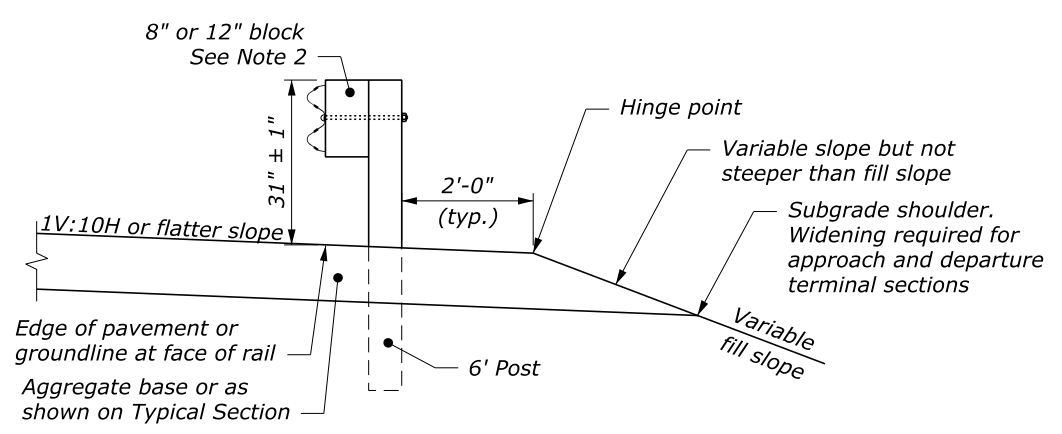
STRUCTURAL SHAPE POST



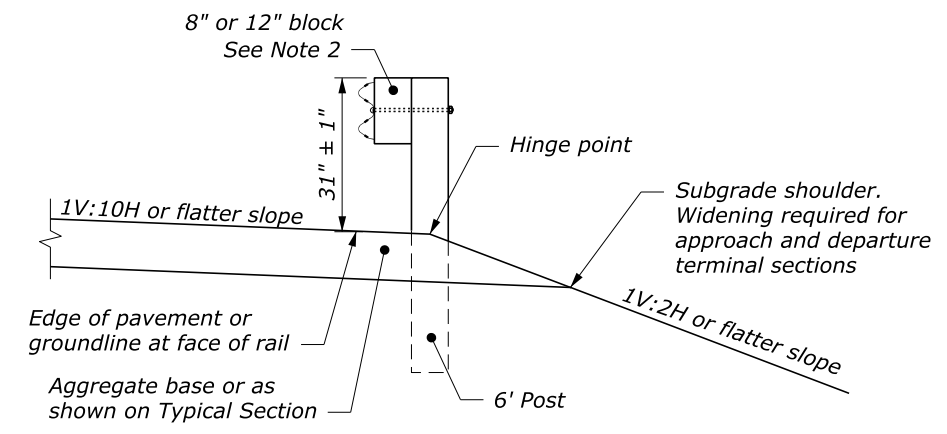
FLEXIBLE DELINEATOR GUARDRAIL MOUNT

NOTE:

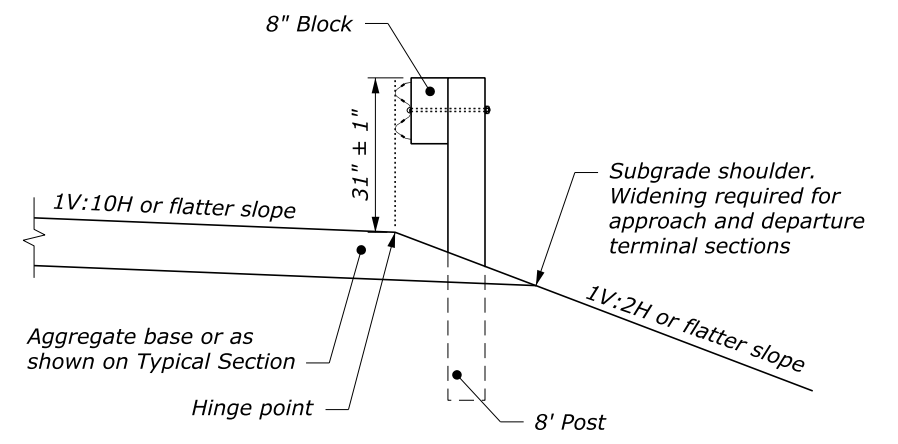
1. When encountering impenetrable material, one post may be omitted in locations where the typical guardrail cross section includes 2-feet (min.) between the back of the guardrail post and the hinge point. For all other locations, see Section 617 and Details C617-13 or C617-37.
2. Size of block shown elsewhere on the plans. Block may be wood, plastic, or composite material. Use consistent material throughout the length of guardrail run.
3. Install a flexible hinged delineator every fourth post. Fasten delineator to the web of the steel post using either an adhesive or mechanical means according to the manufacturer's recommendations. Match the color of the reflective element with the edge line. Other types of delineators may be used as approved by the CO.
4. In erodible or uncompacted soils, increase post length to 8'.
5. Dimensional tolerances not shown or implied are intended to be those consistent with the proper functioning of the part, including its appearance, and accepted manufacturing practices.



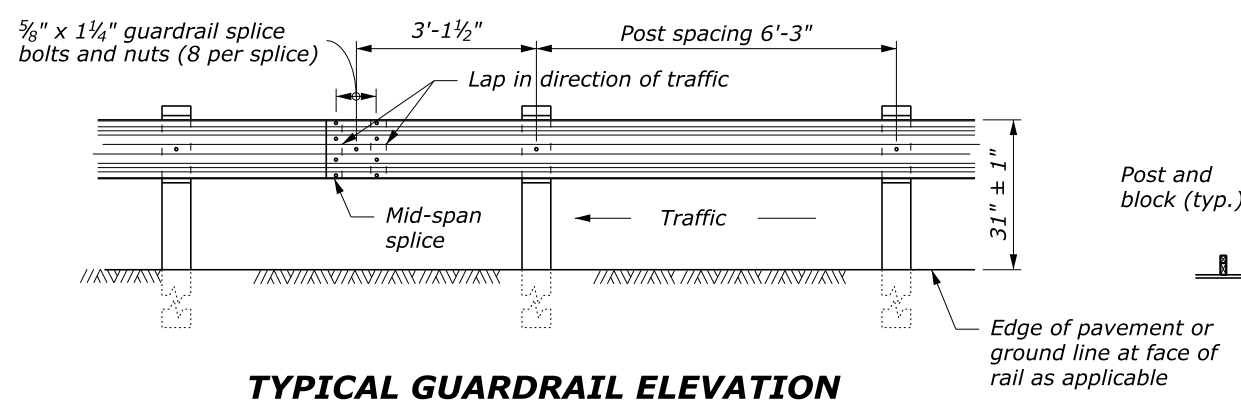
TYPICAL GUARDRAIL CROSS SECTION 6' POST, 8" OR 12" BLOCK



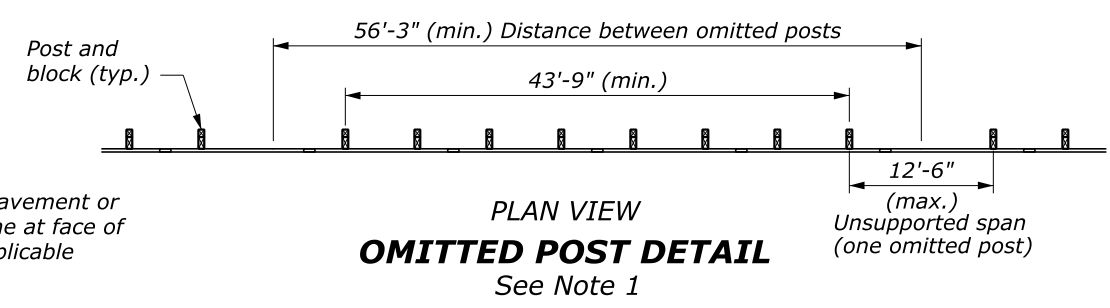
TYPICAL GUARDRAIL CROSS SECTION 6' POST CENTERED ON HINGE, 8" OR 12" BLOCK
See Note 4



TYPICAL GUARDRAIL CROSS SECTION 8' POST ON SLOPE, 8" BLOCK



TYPICAL GUARDRAIL ELEVATION



OMITTED POST DETAIL
See Note 1

NO SCALE

U.S. DEPARTMENT OF TRANSPORTATION FEDERAL HIGHWAY ADMINISTRATION CENTRAL FEDERAL LANDS HIGHWAY DIVISION	
U.S. CUSTOMARY DETAIL	
MGS W-BEAM GUARDRAIL STEEL POSTS	
DETAIL APPROVED FOR USE 04/2020	DETAIL
REVISED:	C617-32

\$\$\$DATE\$\$\$
 \$\$\$TIME\$\$\$
 \$\$\$DGN\$\$\$
 \$\$\$USER\$\$\$

FP-14
SPECIAL CONTRACT REQUIREMENTS
For

**4569DR-CA
(165269) Itroop Road Guiderail**

Guardrail and Signing on:

Route 0111-10

for the

**KARUK TRIBE
SISKYOU COUNTY, CALIFORNIA**

May 2021



SPECIAL CONTRACT REQUIREMENTS

The following Special Contract Requirements amend and supplement the *Standard Specifications for Construction of Roads and Bridges, on Federal Highway Projects (FP-14)*, U.S. Department of Transportation, Federal Highway Administration.

DIVISION 100 GENERAL REQUIREMENTS

Delete the words “Contracting Officer (CO), CO, and Government and replace with “Tribe” for the entire FP-14.

Section 101. – TERMS, FORMAT, AND DEFINITIONS**101.03 Abbreviations.**

(a) **Acronyms.** Add the following:

EEBACS — Engineer’s Estimating, Bidding, Award, and Construction System
GSA – General Services Administration

(b) **US Customary abbreviations and symbols.** Delete the text and substitute the following:

°F	— degrees Fahrenheit	temperature
A	— ampere	electric current
ac.	— acre	area
BTU	— British Thermal Unit	energy
cu. in. or in³	— cubic inches	volume
cu. ft., cf, ft³ or CUFT	— cubic feet	volume
cu. yd., cy, yd³ or CUYD	— cubic yards	volume
D	— day	time
deg. or °	— degree	plane angle
Fc	— foot-candles	luminous intensity
fl. oz.	— fluid ounces	volume
ft. or '	— foot or feet	length
gal. or GAL	— gallon	volume
H	— Henry	inductance
hr. or HR	— hour	time
Hz	— hertz (s ⁻¹)	frequency
in. or "	— inch or inches	length
K	— kelvin	temperature
lb or LB, lbs	— pound, pounds	mass
Lbf	— pound-force	force
lnft or LNFT	— linear foot	length
mi.	— miles	length
min. or m	— minute	time
min. or '	— minute	plane angle
oz.	— ounces	mass
Psi	— pounds/square inch	pressure

Q	— cubic feet/second	flow rate
sec. or s	— second	time
sec. or "	— second	plane angle
sq. in. or in²	— square inches	area
sq. ft., sf, ft² or SQFT	— square feet	area
sq. yd., sy, yd² or SQYD	— square yards	area
T	— short ton (2000 lbs)	mass
V	— volt (W/A)	electric potential
W	— watt (J/s)	power
yd or YD	— yard or yards	length
Ω	— ohm V/A	electric resistance

(c) **Metric unit abbreviations and symbols.** Delete the text and substitute the following:

A	— ampere	electric current
Cd	— candella	luminous intensity
°C	— degree Celsius	temperature
D	— day	time
deg. or °	— degree	plane angle
g or gram	— gram	mass
H	— Henry	inductance
Ha	— hectare	area
hr. or HR	— hour	time
Hz	— hertz (s ⁻¹)	frequency
J	— Joule (N·m)	energy
K	— kelvin	temperature
Kg	— kilogram	mass
L	— liter	volume
Lx	— lux	illuminance
M	— meter	length
mm	— millimeter	length
m²	— meter squared	area
m³	— cubic meter	volume
min. or m	— minute	time
min. or '	— minute	plane angle
N	— Newton (kg·m/s ²)	force
Pa	— Pascal (N/m ²)	pressure
sec. or s	— second	time
sec. or "	— second	plane angle
T	— metric ton	Mass
V	— volt (W/A)	electric potential
W	— watt (J/s)	Power
Ω	— ohm V/A	electric resistance

101.04 Definitions.Add the following:

EEBACS — Engineer’s Estimating, Bidding, Award, and Construction System. A web-based system used by the Government, Construction Contractors, and Subcontractors on this Government contract to prepare “*Inspector’s Daily Record of Construction Operations*” (*Contractors Daily Reports*) and measurement notes (pay notes and field measurement documentation).

Roadway Prism Delete the text and substitute the following:

Roadway Prism – The volume defined by the area between the original terrain cross-section and the final design cross-section multiplied by the horizontal distance between the centroids (geometric center) of the area.

Subcontractor Delete the text and substitute the following:

Subcontractor – An individual or legal entity with which the Contractor sublets part of the work. This includes subcontractors and material suppliers at any tier.

Tribe – The Karuk Tribe

Section 105. — CONTROL OF MATERIAL**105.01 Source of Supply and Quality Requirements.** Add the following:

Materials containing petroleum-based solvents such as cutback asphalts and traffic paints may be restricted from use by local laws or ordinances in certain geographic areas. Upon presenting proof of such restrictions, alternate materials considered acceptable to the CO may be substituted for the materials specified in the contract.

BUY AMERICA - Steel and iron materials must be melted and manufactured in the United States except:

1. Foreign pig iron and processed, pelletized, and reduced iron ore may be used in the domestic production of the steel and iron materials
2. If the total combined cost of the materials does not exceed the greater of 0.1 percent of the total bid or \$2,500, materials produced outside the United States may be used if authorized

Furnish steel and iron materials to be incorporated into the work with certificates of compliance and certified mill test reports. Mill test reports must indicate where the steel and iron were melted and manufactured.

105.04 Storing and Handling Material. Add the following after the third sentence of the second paragraph:

For Contractor-located, non-commercial staging, storing, and material handling areas, secure environmental clearances according to Subsection 107.10.

Add the following:

The Contractor may use the eastbound lane of Itroop Road within 500' of the work zone for staging area and storage of materials.

Use all products according to the manufacturer's recommendations for handling, storage, and disposal. Follow the requirements of FAR Clause 52.236-10 Operations and Storage Areas and FAR Clause 52.236-12 Cleaning Up. Maintain the staging and storage areas in a clean, neat, and orderly condition satisfactory to the CO.

Store construction materials within the limits indicated on the contract drawings. Properly store materials according to the applicable permit and the requirements in Section 107, 157, 203, 204, 624, and 625. Check the storage areas weekly and according to the applicable permit.

Store construction, building and waste materials, and containers in designated areas indoors or protect with a suitable covering.

Submit a site map showing the material storage and stockpile locations at least 14 calendar days prior to the start of construction activities.

Keep the manufacturer's MSDS, an inventory of the material, and emergency numbers near the storage area. Take appropriate measures to ensure that incompatible chemicals are not stored next to each other.

Section 106. — ACCEPTANCE OF WORK

106.01 Conformity with Contract Requirements. Delete (a) and (b) and substitute the following:

(a) Disputing Government test results. If the accuracy of Government test results is disputed, promptly inform the CO. If the dispute is unresolved after reasonable steps are taken to resolve the dispute, further evaluation may be obtained by written request. Include a narrative describing the dispute and a proposed resolution protocol that addresses the following:

- (1) Sampling method
- (2) Number of samples
- (3) Sample transport
- (4) Test procedures
- (5) Testing laboratories
- (6) Reporting
- (7) Estimated time and costs
- (8) Validation process

(b) Alternatives to removing and replacing non-conforming work. As an alternative to removal and replacement, the Contractor may submit a written request to:

- (1) Have the work accepted at a reduced price; or
- (2) Be given permission to perform corrective measures to bring the work into conformity.

The request must contain supporting rationale and documentation. Include references or data justifying the proposal based on an evaluation of test results, effect on service life, value of material or work, quality, aesthetics, and other tangible engineering basis. The CO will determine disposition of the nonconforming work.

Add the following after (b):

The number of significant figures used in the calculations will be according to ASTM E 29, absolute method.

Where sample/testing procedures make reference to AASHTO, ASTM, or other standards (designated as FLH T), the procedure as modified in the Materials Manual shall govern. Where the specifications make reference to AASHTO Test T11, "Procedure B - Washing Using a Wetting Agent" shall be the procedure followed.

Where the specifications make reference to AASHTO Test T310, "Direct Transmission Method of In-Place Nuclear Density and Moisture Content" shall be the procedure followed.

106.02 Visual Inspection. Delete the Subsection and substitute the following:

106.02 Visual Inspection. Acceptance is based on visual inspection of the work for compliance with the contract requirements. In the absence of specific contract requirements or tolerances, use prevailing industry standards.

106.03 Certification. Add the following after the second paragraph:

See Table 106-3 for schedule for full or partial acceptance by material certification. Submit certification and sample of material for testing as required.

Delete the third paragraph and substitute the following:

Check certifications before incorporating the material into the work to ensure that the requirements of the contract have been met. Mark the certifications with the following information:

- Project number and name;
- Pay item number and description;
- Contractor signed certification stating "to the best of our knowledge the materials certified by the attached certification represent the materials incorporated into the work of this contract"; and
- Date.

Table 106-3 Schedule For Full or Partial Acceptance by Materials Certification. Add Table 106-3 following Table 106-2.

**Table 106-3
Schedule For Full or Partial Acceptance by Materials Certification**

Section	Description	Material	Material Property Or Specification	Frequency	
				Certification	Sample
302	Minor Crushed Aggregate	Crushed Aggregate	Source, Quality and Gradation	1 per source	1 per source
312	Dust Palliative	Calcium Chloride Magnesium Chloride, Lignosulfonate,	As specified	1 per shipment	First shipment
403	Asphalt Concrete	Aggregate Asphalt Mix	Source quality, Gradation, Stability, and Grade	1 per mix	1 per source
634 and 635	Permanent Pavement Markings,	634.02 as applicable, 635 as applicable	As specified	1 per source	-----

Section	Description	Material	Material Property Or Specification	Frequency	
				Certification	Sample
	Temporary Traffic Control				
701	Hydraulic Cement	Portland Cement, Blended Hydraulic Cement, Masonry and Mortar Cement	AASHTO M 85, M 240, ASTM C 91 and ASTM C1392 as applicable	1 per shipment	1 per 100 tons
702.01	Asphalt Material	Asphalt Cement	AASHTO M 226 or M 320, as applicable	1 per shipment	1 per shipment
702.02	Asphalt Material	Emulsified Asphalt	AASHTO M 140 or M 208 as applicable	1 per shipment	1 per shipment
702.03	Asphalt Material	Asphalt Materials used for Damproofing and Waterproofing Concrete and Masonry Surfaces	As specified for each type of asphalt material	1 per shipment	-----
702.05	Antistrip	As specified	As applicable	1 per shipment	-----
706	Concrete and Plastic Pipe	As specified	As applicable	1 per shipment	-----
707	Metal Pipe	As specified	As applicable	1 per shipment	-----
708	Plastic Pipe	As specified	As applicable	1 per shipment	-----
709	Reinforcing and Prestressing Steel	As specified	As applicable	1 per shipment	For 709.01 submit 3, 1-yard (1-meter) bars of each size and grade of bar furnished. 709.02 submit 1 6-foot (2-meter) length for each size furnished
710	Fence and Guardrail	As specified	As applicable	1 per shipment	-----
711	Concrete Curing Material and Admixtures	As specified	As applicable	1 per material source per material type	-----
712	Joint Material (all)	As specified	As applicable	1 per shipment	-----
713	Roadside Improvement Materials (all)	As specified	As applicable	1 per shipment	-----
714	Geosynthetic Material (all)	As specified	As applicable	1 per shipment	1 per project per type

Section	Description	Material	Material Property Or Specification	Frequency	
				Certification	Sample
715	Piling	As specified	As applicable	1 per shipment	-----
716	Material for Timber Structures	Timber and Hardware	As applicable	1 per shipment	-----
717	Structural Metal	As specified	As applicable	1 per shipment	717.01(e) minimum 6 per shipment for each size used. 717.10 1 per project
718	Traffic Signing and Marking Material (all)	As specified	As applicable	1 per shipment	-----
719	Paint	As specified	As applicable	1 per batch\lot	1 sample for quantities > 25 gallons (100L)
720	Structural Wall and Stabilized Embankment Material (all)	As specified	As applicable	1 per shipment per material type	-----
721	Electrical and Illumination Material (all)	As specified	As applicable	1 per shipment per material type	-----
722	Anchor Material	As specified	As applicable	1 per shipment per material type	-----
725	Miscellaneous materials	As specified	As applicable	1 per shipment per material type	-----

Section 107A. — INDIAN PREFERENCE (ADDED SECTION)

107A.01 Definitions. As used in this clause, the following definitions apply:

Core Workforce – Contractor’s workforce composed of full-time employed individuals necessary to satisfy the contractor’s reasonable needs for supervisory or especially experienced personnel to assure an efficient execution of the contract work. Includes any Indian already employed by the contractor.

Indian - A person who is an enrolled member of a federally recognized American Indian Tribe or Alaska Native.

107A.02 Employment Opportunities. To the extent feasible and consistent with the efficient performance of this contract, give preference in employment under this contract to Indians who are qualified to perform regardless of age (subject to existing laws and regulations), sex, religion, or Tribal affiliation. Maintain statistical records as are necessary to indicate compliance with this paragraph.

107A.03 Application. This Section does not apply to the contractor’s core workforce.

Except for the core workforce, follow the process set forth in this Section for the hiring of all construction workers who will be employed on this project.

107A.04 Preliminary Meeting. Within 20 calendar days after award of the contract, set up a pre-construction, in-person meeting with the Tribe to discuss employment opportunities. The contact person is:

Misty Rickwalt
Transportation Director
Karuk Tribe
(530) 627-3016, mrickwalt@karuk.us

107A.05 Publicly Announced Preference. Announce publicly the contractor’s preference in employment to Indians for this project.

(a) **Advertising.** Advise recruitment sources in writing and include a statement in all advertisements for employment that qualified Indian applicants will be given preference in employment.

(b) **Initial Notice.** Not more than 20 calendar days after award of the contract, post a written notice to the Tribe identified in Subsection 107A.03. The notice shall set forth the Contractor’s employment needs, including:

(1) Approximate numbers and types of employees needed;

- (2) Approximate dates of employment;
- (3) The experience or special skills required for employment, if any; and
- (4) Other pertinent information necessary to advise prospective employees of any other employment requirements.

Request the Tribe to provide assistance to the Contractor in filling its employment needs.

Notify the Tribe that any employment preference is an Indian preference, not a Tribal preference. Equal opportunity for employment will be provided to all Indian applicants, regardless of Tribal affiliation.

107A.06 Tribal Notice of Employment Needs. Notify the Tribal office identified in Subsection 107A.04 of any specific need for employees. Provide this notice at least 1 week after the initial notice. The Tribal office will have 1 week after receiving the specific need notice to provide qualified or qualifiable applicants to satisfy the stated employment need.

107A.07 Employment. Give full consideration to all qualified job applicants identified by the Tribal office and to any other Indian applicant. If after giving full consideration, the contractor's employment needs remain unsatisfied, the contractor may employ non-Indians as necessary to fill-out its workforce needs according to the "Equal Opportunity" clause in this contract. The contractor is not required to employ any applicant who, in the contractor's opinion, is not qualified to perform the classification of work required.

107A.08 Records. Maintain and submit records concerning the contractor's Indian preference as follows:

(a) Maintain written records under this contract which indicate—

- (1) The numbers of Indians seeking employment for each employment position available under this contract;
- (2) The number and types of positions filled by Indians and non-Indians;
- (3) The total number of Indians employed under this contract;
- (4) For those positions where there are Indian applicants, and a non-Indian is selected for employment, the reason(s) why the Indian applicant was not selected;

(b) Submit to the Contracting Officer for approval a quarterly report which summarizes the Contractor's Indian preference activities and indicates the number and types of available positions filled by Indians and non-Indians.

(c) Maintain records pursuant to this clause and keep them available for review by the Government for one year after final payment under this contract, or for such longer period as may be required by any other clause of this contract or by applicable law or regulation.

107A.09 Subcontracting. Include the provisions of this clause, including this subsection, in each subcontract awarded at any tier under this contract and notify the Contracting Officer of such subcontracts.

107A.10 Enforcement. In the event of noncompliance with this clause, the Contracting Officer may terminate the contract in whole or in part or may impose any other sanctions authorized by law or by other provisions of the contract.

Section 109. — MEASUREMENT AND PAYMENT**109.01 Measurement of Work.** Add the following after the sixth paragraph:

Prepare, sign, and submit electronic measurement notes (pay notes and supporting field documentation) using EEBACS. Measurement notes will be reviewed by the CO. Unacceptable measurement notes will be electronically rejected and returned. Correct rejected measurement notes and resubmit electronically.

109.08 Progress Payments.**(a) General.** Delete the last sentence and substitute the following:

The CO may withhold partial progress payment according to Subsection 109.08 (g) for failure to make satisfactory progress until a construction schedule or schedule update is approved by the CO.

(b) Closing date and invoice submittal date. Delete the text and substitute the following:

Submit invoices to the designated billing office by the 7th day after the closing date. Invoices received by the designated billing office after the 16th day following the closing date will not be accepted for payment processing that month. Include late, unprocessed invoice submittals in the following months invoice.

(d) Government's receiving report. Delete the first sentence and substitute the following:

The Government's receiving report will be developed using the measurements and quantities from Pay Notes received by the CO in EEBACS and determined acceptable.

(e) Processing progress payment requests.**(1) Proper invoices.** Delete the title and text and substitute the following:**(1) Invoices received by the 7th day following the closing date.**

(a) Proper invoices. If the invoice meets the requirements of Subsection 109.08(c), and the quantities and unit prices shown on the Contractor's invoice agree with the corresponding quantities and unit prices shown on the Government's receiving report, the invoice will be paid.

(b) Defective invoices. If the invoice does not meet the requirements of Subsection 109.08(c), or if any of the quantities or unit prices shown on the Contractor's invoice exceed the corresponding quantities and unit prices shown on the Government's receiving report, the invoice will be deemed defective and the Contractor so notified according to FAR Clause 52.232-27(a)(2). Defective invoices will not be corrected

by the Government and will be returned to the Contractor within 7 days after the Government's designated billing office receives the invoice.

Revise and resubmit returned invoices by the 18th day following the closing date. The CO will evaluate the revised invoice. If the invoice still does not meet the requirements of Subsection 109.08(c), the Contractor will be so notified according to FAR Clause 52.232-27(a)(2), and no progress payment will be made that month. Correct the deficiencies and resubmit the invoice the following month.

If the revised invoice meets the requirements of Subsection 109.08(c), but still had quantities or unit prices exceeding the corresponding quantities and unit prices shown on the Government's receiving report, the Government's data for that item or work will be used. The Contractor's invoice, as revised by the Government's receiving report, will be forwarded for processing by the 23rd day following the closing date. The Contractor will be notified by the 23rd day following the closing date of the reasons for any changes to the invoice.

(2) Defective invoices. Delete the title and text and substitute the following:

(2) Invoices received between the 8th and 16th day following the closing date.

(a) Proper invoices. If the invoice meets the requirements of Subsection 109.08(c), and the quantities and unit prices shown on the Contractor's invoice agree with the corresponding quantities and unit prices shown on the CO's receiving report, the invoice will be deemed proper and forwarded for processing within 7 days of receipt.

(b) Defective invoices. If the invoice does not meet the requirements of Subsection 109.08(c), the invoice will be deemed defective, the Contractor so notified according to FAR Clause 52.232-27(a)(2), and no progress payment will be made that month. Correct the deficiencies and resubmit the invoice the following month.

If the invoice meets the requirements of Subsection 109.08(c), but has quantities or unit prices exceeding the corresponding quantities and unit prices shown on the Government's receiving report, the Government's data for that item of work will be used. The Contractor's invoice, as revised by the Government's receiving report, will be forwarded for processing within 7 days of the Government's receipt of the invoice. The Contractor will be notified of the reasons for any changes to the invoice.

(f) Partial payments. Delete the subsection and substitute the following:

(f) Partial payments. Progress payments may include partial payment for material to be incorporated in the work according to FAR Clause 52.232-5(b)(2), provided the material meets the requirements of the contract and is delivered on, or in the vicinity of, the project site or stored in acceptable storage places.

Partial payments for stockpiled manufactured material (aggregates) will be based on Contractor process control test results. If test results show the material to be out-of-specification, or in

“reject” where statistical evaluation procedures are used, no payment for stockpiled materials will be made.

Partial payment for material does not constitute acceptance of such material for use in completing items of work. Partial payments will not be made for living or perishable material until incorporated into the project.

Individual and cumulative partial payments for preparatory work and material will not exceed the lesser of:

- (1) 80 percent of the contract bid price for the item; or
- (2) 100 percent of amount supported by copies of invoices submitted.

The quantity paid will not exceed the corresponding quantity estimated in the contract. The CO may adjust partial payments as necessary to protect the Government.

Section 151. — MOBILIZATION

Payment

151.03 Add the following:

Payment will be made under:

<u>Pay Item</u>	<u>Description of Item</u>	<u>Pay Unit</u>
15101	Mobilization ,	L.S.

Section 156. — PUBLIC TRAFFIC**Construction Requirements**

156.04 Accommodating Traffic During Work. Delete the first paragraph and substitute the following:

Accommodate traffic according to the MUTCD, contract traffic control drawings, Section 635, and this Section. Submit a traffic control plan for approval according to Subsection 104.03. Submit a traffic control plan at least 30 days before intended use.

156.05 Maintaining Roadways During Work.

(a) Add the following:

Do not construct diversions outside of the clearing limits or use alternate route detours without the approval of the CO.

156.07 Limitations on Construction Operations.

(c) Delete the first sentence and substitute the following:

For alternate one-way traffic control, provide a minimum lane width of 10 feet (3 meters).
For two-way traffic, provide a minimum roadway width of 22 feet (6.7 meters).

Section 203. — REMOVAL OF STRUCTURES AND OBSTRUCTIONS

Construction Requirements

203.04 Removing Material.

(c) **Concrete removal in repair areas.** Add the following to the second paragraph:

Use hand tools (hammers and chisels) to remove final particles of concrete or to achieve the required depth.

Delete the third paragraph and substitute the following:

Sandblast all exposed structural steel, reinforcing steel, and concrete surfaces that will be in contact with repair material. Remove all rust and foreign material. Clean the sound concrete surface by flushing with a high-pressure water jet or oil-free compressed air.

203.05 Disposing of Material.

(a) **Remove from Project.** Add the following:

Secure clearances according to Subsection 107.10.

(b) **Burn.** Delete the subsection.

(c) **Bury.** Delete the subsection.

Payment

203.08 Add the following:

Payment will be made under:

<u>Pay Item</u>	<u>Description of Item</u>	<u>Pay Unit</u>
20302	Removal of Guardrail	L.F.

Section 617. — GUARDRAIL**Description****617.01**

(a) Add the following:

MGS — Midwest Guardrail System (MGS)

(d) Add the following:

MGS Flared	- Straight flared MGS W-beam terminal
MGS Tangent	- Tangent MGS W-beam terminal
SBL-FAT	- Flared SBL anchor terminal

Construction Requirements

Use tangent terminals meeting NCHRP 350 Test Level 2. When proprietary terminals are required, submit the installation manual from the manufacturer for the terminal, including inspection checklists.

617.04 Post Installation. Delete the fifth and sixth paragraphs and substitute the following:

When a post cannot be placed at its normal location due to an impenetrable object an additional blockout may be added. If the post cannot be offset, follow the post in rock detail, the long span detail, or omit a post as shown in the plans.

Use the post length as shown in the plans. Do not change the post length or spacing in terminal sections.

Payment

617.13 Add the following:

Payment will be made under:

<u>Pay Item</u>	<u>Description of Item</u>	<u>Pay Unit</u>
61701	Guardrail System MGS, Type 2 Class A Steel Posts	L.F.
61702-1500	Terminal Section, Type MGS Tangent	EA.
61702-1700	Terminal Section, Type MSG-BAT	EA.

Section 633. — PERMANENT TRAFFIC CONTROL

Payment

633.10 Add the following:

Payment will be made under:

<u>Pay Item</u>	<u>Description of Item</u>	<u>Pay Unit</u>
63301	Sign System	EA.

Section 635. — TEMPORARY TRAFFIC CONTROL**Description****635.01** Delete the second paragraph and substitute the following:

Arrow board, portable changeable message sign, barricade, and warning light types are designated in the MUTCD.

Material**635.02** Delete the Subsection and substitute the following:**635.02** Conform to the MUTCD and the following Sections and Subsections:

Concrete barrier (temporary)	618
Delineator and object marker retroreflectors	718.08
Guardrail (temporary)	617
Retroreflective sheeting	718.01
Sign panels	718.03
Sign posts	718.04
Sign hardware	718.06
Temporary plastic fence	710.11
Temporary pavement markings	718.16

Construction Requirements**635.07 Construction Signs.** Delete the first paragraph and substitute the following:

Fabricate and install sign panels according to Subsection 633.05. Use Type III, IV, VIII, IX, or XI prismatic retroreflective sheeting. Use fluorescent sheeting for orange signs. For roll-up signs, use fluorescent Type VI retroreflective sheeting.

Add the following:

Provide the same type of sheeting on all post-mounted construction signs that pertain to the project.

Use crashworthy posts within the traversable area adjacent to traffic.

635.09 Flaggers. Add the following:

Perform the work described under MUTCD Part 6. Use fluorescent retroreflective sheeting on the “SLOW” side of the flagger paddle.

Payment

635.25 Add the following:

Payment will be made under:

<u>Pay Item</u>	<u>Description of Item</u>	<u>Pay Unit</u>
63501	Temporary Traffic Control	L.S.

Section 710. — FENCE AND GUARDRAIL

710.06 Rail Elements.

(a) Metal beam rail. Delete the first sentence and substitute the following:

Furnish guardrail posts conforming to the Task Force 13 *Guide to Standardized Roadside Safety Hardware*.

(b) Box beam rail. Delete the first sentence and substitute the following:

Furnish guardrail posts conforming to the Task Force 13 *Guide to Standardized Roadside Safety Hardware*.

710.07 Guardrail Posts. Delete the first sentence and substitute the following:

Furnish guardrail posts conforming to the Task Force 13 *Guide to Standardized Roadside Safety Hardware*.



PREPARED BY:
 PROJECT NAME: Itroop Road Guiderail Replacement
 SUBJECT: Engineer's Estimate

PREPARED FOR: The Karuk Tribe
 DATE: May 26, 2021
 PROJECT NUMBER: 4569DR-CA (165269)

Roadway Estimate

BID NO.	ITEM #	CONTRACT DESCRIPTION	ESTIMATED QUANTITY	UNIT	UNIT PRICE	ESTIMATED PRICE
1	15101	MOBILIZATION	1	L.S.	\$2,950.00	\$2,950.00
2		TERO TAX (2%)	1	L.S.	\$805.00	\$805.00
3		CULTURAL MONITOR	1	L.S.	\$400.00	\$400.00
4	20302	REMOVAL OF GUARDRAIL	589	L.F.	\$5.00	\$2,945.00
5	61701	GUARDRAIL SYSTEM MGS, TYPE 2, CLASS A STEEL POSTS	389	L.F.	\$43.00	\$16,727.00
6	61702-1500	TERMINAL SECTION, TYPE MGS TANGENT	3	EA.	\$2,800.00	\$8,400.00
7	61702-1700	TERMINAL SECTION, TYPE MSG-BAT	1	EA.	\$5,500.00	\$5,500.00
8	63301	SIGN SYSTEM	4	EA.	\$450.00	\$1,800.00
9	63501	TEMPORARY TRAFFIC CONTROL	1	L.S.	\$1,500.00	\$1,500.00
Roadway Sub-Total =						\$41,027.00

Construction Contingency = 10% of Sub-Total = \$4,102.70

Grand Total = \$45,129.70

The user of the above estimate understands that Red Plains Professional (RPP), the Consultant, has no control over the cost or availability of labor, equipment or materials, or over market conditions or the Contractor's method of pricing, and that the Consultant's opinions of probable construction costs are made on the basis of the Consultant's professional judgment and experience. The Consultant makes no warranty, express or implied, that the bids or the negotiated cost of the Work will not vary from the above. This estimate does not include costs associated with relocation of existing power, telephone cable television or natural gas utilities or costs to maintain services during construction. This estimate does not include costs for any additional geotechnical services.

