



Administrative Office

Phone: (530) 493-1600 • Fax: (530) 493-5322
 64236 Second Avenue • Post Office Box 1016 • Happy Camp, CA 96039

Request for Proposals

16-RFP-031

For More Information: Debbie Bickford, (530) 493-1600, ext. 2105, dbickford@karuk.us
Proposal Deadline: Monday, July 25, 2016, no later than 5:00 pm (Pacific Standard Time)

The Karuk Tribe requests proposals for the following Scope of Work required for the installation of equipment on the Community Obstacle Course to be located at **Gale Zink Memorial Park** in Happy Camp, California.

Task One – Installation of Corral Mini-Course (complete installation instructions available upon request)

511-301 CORRAL MINI-COURSE

Page 1
Rev 6/24/11

IMPORTANT

PLEASE READ THESE INSTRUCTIONS BEFORE COMMENCING ASSEMBLY. Please retain this instruction sheet in your files. It contains important replacement parts information. All equipment must be installed in accordance with these instructions. It is important to use and maintain all public playground equipment properly. Playground equipment, which is improperly maintained, can cause serious injury. Periodical inspections, maintenance, repair and/or replacement of damaged parts is necessary for safe operation of equipment. Appropriate publications, available at no charge, from the consumer product safety commission, include "A Handbook for Public Playground Safety". You can receive your free copy by calling 1-301-504-0580.

PACKING LIST		HARDWARE BAG	
1 CTN	- 1 Hardware Bag	5	- 105-016 1 7/8" Alum Pipe Plug
	- 1 103-141 Net	9	- 583-901 S-Hook
	- 2 503-501 Elbow	34	- 196-802 1/2" x 1/2" Socket Set Screw
	- 4 513-511 Adaptor	32	- 116-850 5/16" x 3" Button HD Bolt
	- 1 583-518A Center Fitting	34	- 216-512 5/16" Button HD Nut
1 CTN	- 8 103-006 Ring	32	- 326-501 5/16" Lock Washer
1 BDL	- 2 103-641 Post	2	- 416-350 3/16" Socket Key
	- 1 103-202 Net Bar	1	- 416-400 1/4" Socket Key
1 BDL	- 1 503-211 Turning Bar	2	- 805-532 Warning Label
	- 2 503-210 Turning Bar	2	- 805-534 Sportsplay Label
1 BDL	- 2 503-206 Turning Bar	1	- Maintenance Checklist
1 BDL	- 1 503-228 Turning Bar		
1 BDL	- 1 503-229 Turning Bar		
1 BDL	- 2 503-623 Post		
1 BDL	- 1 103-625 Post		
1 BDL	- 1 103-626 Post		
1 BDL	- 6 503-203 Turning Bar		
1 BDL	- 4 103-627 Post		
1 BDL	- 1 103-627 Post		
1 BDL	- 1 103-628 Post		
2 PIPE	- 2 103-646 Sliding Pole		
2 PIPE	- 2 103-644 Sliding Pole		
2 PIPE	- 2 583-602A 1 7/8" x 13'-0" Leg		

2 CTNS 9 BDL 6 PIPE 17 TOTAL PCS WT 495# CLASS 70
 SportsPlay Equipment, Inc., 5642 Natural Bridge, St. Louis, MO 63120 (314) 389-4140 ©1992
www.sportsplayinc.com

Task Two – Installation of the Quad Rope Climber (complete installation instructions available upon request)

511-140 Quad Rope Climber

Page 1 of 3
Rev 01/27/2011

IMPORTANT

PLEASE READ THESE INSTRUCTIONS BEFORE COMMENCING ASSEMBLY. All equipment must be installed in accordance with these instructions. Check your shipment against Bill of Lading and Parts list. Any missing or broken parts must be reported to your distributor within 10 days of receipt of your order. When properly installed and maintained, equipment will give many years of Safe, Trouble-Free use. Periodically check for loose or broken parts. Loose bolts must be tightened and broken parts must be replaced as they can possibly create dangerous situations leading to unnecessary accidents. Resilient Surfacing should be used under all playground equipment. Appropriate publications, available at no charge, from the Consumer Product Safety Commission, include "A Handbook for Public Playground Safety". You can receive your free copy by calling 1-301-504-7908.

← 8' →
↑ 1' ↓
↑ 12' ↓

Welded Link
553-224 Rope Support
553-219 Post
337-101 Rope Assembly

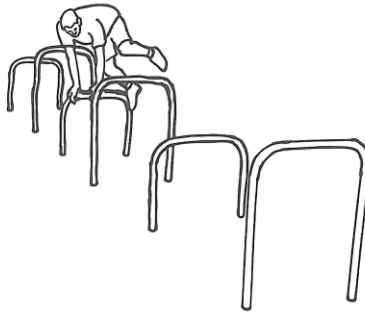
<u>PACKING LIST</u>		<u>HARDWARE BAG</u>	
1 CTN	4 Hardware Bag	8	345-506 D Shackle
	2 337-101 12' Rope Assembly	1	345-905 D Shackle Socket Key
	2 217-104 3/8" rebar 18" long	4	196-807 3/8"x 3/8" Socket Set Screw
1 Pipe	1 553-219 4 1/2" post 17' long	8	126-703 3/8" x 1" Button Head Pin Bolt
1 BDL	4 553-225 Brace	1	416-505BPK 7/32" BH Pin Key
	4 553-224 Rope Support	4	105-016 1 7/8" Alum Pipe Plugs
		1	Maintenance Checklist
		8	326-601 3/8" Lock Washers
		1	805-532 Warning Label
		1	805-534 SportsPlay Label

1 CTN	1 BDL	1 pipe	3 TOTAL PCS	WT 225#	CLASS 70
-------	-------	--------	-------------	---------	----------

SportsPlay Equipment, Inc., 5642 Natural Bridge, St. Louis, MO 63120 (314) 389-4140
www.sportsplayinc.com

Task Three – Installation of Over/Under Bars

Over/Under Bars



This event will challenge both upper and lower body. Begin at one end and race through the course vaulting over the smaller bars and running under the taller bars or race through the course by vaulting over both short and tall bars. Have a friend time you for speed.

This will build the Latissimus Dorsi, Triceps, Quadriceps, Hamstrings, and Gastroc muscles.
You should not start an exercise program without the consent of a physician.

Task Four – Teeter Spring Rider Installation (complete installation instructions available upon request)

361-505 Teeter Spring Rider

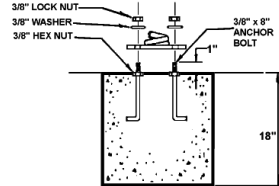
Page 3
Rev. 01/25/2011

ASSEMBLY AND INSTALLATION:

NOTE: All threaded ends of bolts protruding beyond nuts must be cut off and/or peened to eliminate sharp edges. No more than two threads should extend beyond face of nut. All washers, "T" nuts, and other fastener hardware used on round pipe or tubing must be hammered down to conform to the curved underlying surface to eliminate catch points. DO NOT tighten nuts more than hand-tight until entire assembly is completed.

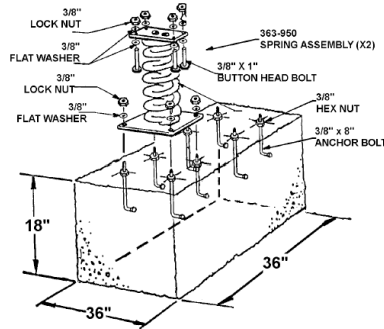
STEP #1: Dig footing hole approximately 3' x 3' x 18" deep. Before the concrete sets, assemble the anchor bolts to both bottom plates of the springs

STEP #2: Push both down into the wet concrete until both plates touch one another squarely and are level with the top of the concrete. See drawing on page 1 for orientation of springs and teeter - make sure you align the spring plates properly.



STEP #3: After concrete hardens for at least 48 hours, assemble the teeter rider seats to the rider by pushing 5/16" Button Head Bolts through the seats and pipe from above. Fasten from bottom using 5/16" Washer and Lock Nut. Tighten Securely.

STEP #4: Bolt the springs to the anchor bolts. Tighten Securely.



SportsPlay Equipment, Inc., 5642 Natural Bridge, St. Louis, MO 63120 (314) 389-4140
www.sportsplayinc.com

Task Five – Tire Challenge Installation (complete installation instructions available upon request)

TIRE CHALLENGE				902-874
ITEM NO.	PART NUMBER	DESCRIPTION	QTY.	
1	913-367	Tire Challenge	1	<div style="text-align: center;"> <p>DETAIL A</p> </div> <div style="text-align: center; margin-top: 20px;"> <p>FOOTING DIAGRAM</p> </div> <div style="text-align: center; margin-top: 20px;"> </div>
2	913-368	Tire Challenge Leg	11	
3	126-701BPS	3/8" x 1-1/4" Button Pin SS	11	
4	316-601	3/8" Flat Washer	11	
5	416-505BPK	7/32" Long Arm Button Pin Key	1	
6	516-400	LockTite	1	

INSTRUCTIONS:

1. Attach 11 legs to Tire Challenge as shown in Detail A. Tighten hardware, lock tite may be used also.
2. Stand Tire Challenge in desired location and mark all hole locations.
3. Dig holes per footing diagram.
4. Place assembly in holes so that the top of plastic is no more than 8" above protective surfacing. Brace and concrete in ground.
5. Install safety surfacing.

Task Six- Sit-Up Station Installation (complete installation instructions available upon request)

511-114 SIT-UP STATION

Page 1 of 1
Rev 4/7/03

*** IMPORTANT ***

PLEASE RETAIN THIS INSTRUCTION SHEET IN YOUR FILES. IT CONTAINS IMPORTANT REPLACEMENT PARTS INFORMATION. ALL EQUIPMENT SHOULD BE INSTALLED IN ACCORDANCE WITH THESE INSTRUCTIONS.

IT IS IMPORTANT TO USE AND MAINTAIN ALL PUBLIC PLAYGROUND EQUIPMENT PROPERLY. PLAYGROUND EQUIPMENT WHICH IS IMPROPERLY MAINTAINED CAN CAUSE SERIOUS INJURY. PERIODICAL INSPECTIONS, MAINTENANCE, REPAIR AND/OR REPLACEMENT OF DAMAGED PARTS IS NECESSARY FOR SAFE OPERATION OF EQUIPMENT AND SAFETY OF USERS. RESILIENT SURFACING SHOULD BE USED UNDER ALL PLAYGROUND EQUIPMENT. APPROPRIATE PUBLICATIONS, AVAILABLE AT NO CHARGE, FROM THE CONSUMER PRODUCT SAFETY COMMISSION, INCLUDE "A HANDBOOK FOR PUBLIC PLAYGROUND SAFETY." YOU CAN RECEIVE YOUR FREE COPY BY CALLING 1-801-504-7908.

PACKING LIST

1 CTN	- 1	Hardware	Bag	12	- 605-506	Clips
1 BDL	- 3	602-906	6' Alum Board	4	- 116-512	5/16" x 3" Hex Hd Bolt
1 BDL	- 3	602-505	Angles	12	- 126-504	5/16" x 1" Carriage Bolt
1 BDL	- 4	503-216	Legs	16	- 216-501	5/16" Flat Washer
1 PIPE	- 1	513-615	Toe Bar	16	- 216-501	5/16" Hex Nut
				1	- 805-532	Warning Label
				1	- 805-534	SportsPlay Label
				1	-	Maintenance Checklist

HARDWARE BAG

1 CTN	3 BDL	1 PIPE	5 TOTAL PCS	WT 80#	CLASS 70
-------	-------	--------	-------------	--------	----------

Sportsplay Equipment, Inc., 5642 Natural Bridge, St. Louis, MO 63120 (314) 389-4140

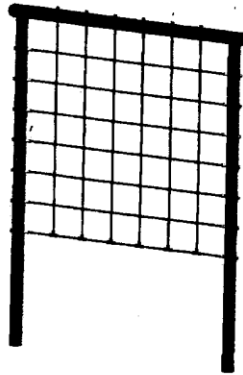
Task Eight – Rope Wall Installation (complete installation instructions available upon request)

902-772 Rope Wall

Rev. 01/15/2009

IMPORTANT

PLEASE READ THESE INSTRUCTIONS BEFORE COMMENCING ASSEMBLY. Please retain this instruction sheet in your files. It contains important replacement parts information. All equipment must be installed in accordance with these instructions. It is important to use and maintain all public playground equipment properly. Playground equipment, which is improperly maintained, can cause serious injury. Periodical inspections, maintenance, repair and/or replacement of damaged parts is necessary for safe operation of equipment. Appropriate publications, available at no charge, from the Consumer Product Safety Commission, include "A Handbook for Public Playground Safety". You can receive your free copy by calling 1-301-504-0708.



Use Area 13' x 20'

PACKING LIST		HARDWARE PACKAGE	
1	Rope Wall Frame	20	Flat Washers
1	Rope Assembly	20	M10 Nylon Insert Lock Nuts
1	Hardware Package	20: 905-848	Bolt Caps w/Radius
		1: 805-534	SportsPlay Label
		1: 805-532	Warning Label

2 Pieces	250 lbs Weight	Class 70
----------	----------------	----------

SportsPlay Equipment, Inc., 5642 Natural Bridge, St. Louis, MO 63120 (314) 389-4140
www.sportsplayinc.com

Responses to this Request for Proposals should include the following:

- 1) A statement of qualifications, including relevant project history. (Be specific as necessary, such as number of years' experience, degree or certification, etc.)
- 2) A proposed approach and rationale for completion of the contract tasks described above, including descriptions of similar work previously completed and the results/benefits achieved.
- 3) A lump sum price, with attached price page.
- 4) Names and telephone numbers of three client references.

Responses must be hand, mail, fax, or email delivered by Monday, July 25, 2016 no later than 5:00 pm (Pacific Standard Time) to:

Contract Compliance Specialist
Karuk Tribe – Administration Office
64236 Second Avenue
P.O. Box 1016
Happy Camp, CA 96039
Emails will be accepted at: compliance@karuk.us

Indian Preference will apply in the selection process in accordance with the Tribal Employment Rights Ordinance (TERO) and/or Indian Preference Act of 1934 (Title 25, USC, Section 47), based on funding source requirements.

All contracts that exceed \$2,500.00 shall be subject to a two percent (2%) Tribal Employment Rights Fee in accordance with the TERO Ordinance.

If applicable, construction contracts in excess of \$2,000, when required by Federal grant program legislation, are subject to compliance with the Davis-Bacon Act (40 USC 276a to a-7) as supplemented by Department of Labor regulations (29 CFR part 5).

A background check consisting of employment history, professional references, and criminal check may be conducted. Applicants will be required to pass the background check in accordance to the Karuk Tribe Personnel Policy and Federal/State/Tribal requirements.

Price Page for 16-RFP-031:

Proposal Submitted by:

Name: _____ **Phone Number:** _____

E-mail: _____ **Fax Number:** _____

Amount requested to be compensated for each task:

- Task 1: _____
- Task 2: _____
- Task 3: _____
- Task 4: _____
- Task 5: _____

- Task 6: _____
- Task 7: _____

- Task 8: _____

List previous experience with installation of playground equipment:

List up to three references with phone numbers below:

- 1) _____
- 2) _____
- 3) _____

Other Comments:

Indian Preference will apply in the selection process in accordance with the Indian Preference Act of 1934 (Title 25, USC, Section 47) and/or the Tribal Employment Rights Ordinance (TERO), based on funding source requirements.

All contracts that exceed \$2,500.00 shall be subject to a two percent (2%) Tribal Employment Rights Fee in accordance with the TERO Ordinance.

If applicable, construction contracts in excess of \$2,000, when required by Federal grant program legislation, are subject to compliance with the Davis-Bacon Act (40 USC 276a to a-7) as supplemented by Department of Labor regulations (29 CFR part 5).

A background check consisting of employment history, professional references, and criminal check may be conducted. Applicants will be required to pass the background check in accordance to the Karuk Tribe Personnel Policy and Federal/State/Tribal requirements.